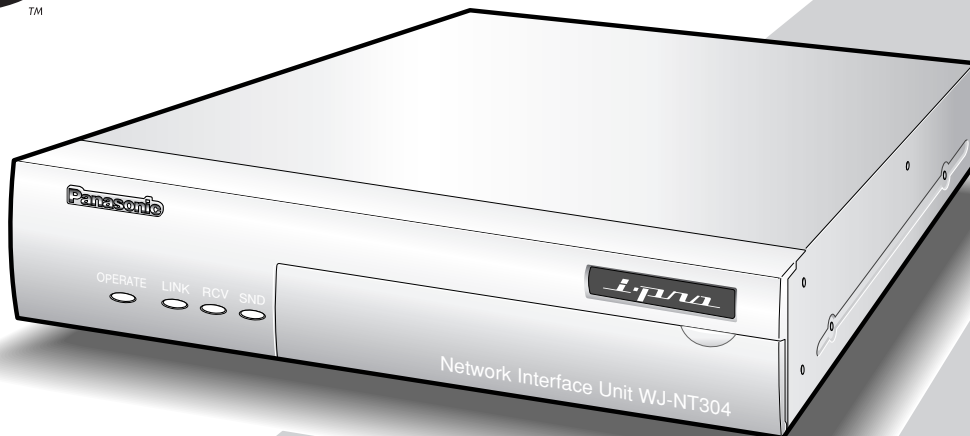


Panasonic

Network Interface Unit

Network Operating Instructions

Model No. **WJ-NT304**



Before attempting to connect or operate this product,
please read these instructions carefully and save this manual for future use.

CONTENTS

Preface	3
About these operating instructions	3
Trademarks and registered trademarks	3
Viewer Software	3
Monitor Images on a PC	4
Monitor images from a single camera	4
Monitor images from multiple cameras	8
Action at an Alarm Occurrence	9
Transmit Images onto an FTP Server	10
Transmit an alarm image at an alarm occurrence (Alarm image FTP transmission)	10
Transmit images at a designated interval or period (FTP periodic transmission)	10
Save images on the SD memory card when failed to transmit images by the FTP periodic transmission function	11
About the Network Security of This Unit	13
Equipped security functions	13
Display the Setup Menu and Configure the Settings of the Unit using a PC	14
How to display the setup menu	14
How to operate the setup menu	15
Configure the basic settings of the unit [Basic setup]	18
Configure the settings relating to images and audio [Camera setup]	24
Configures the multi-screen settings [Multi-screen setup]	31
Configure the alarm settings [Alarm setup]	32
Configure the settings relating to the authentication [Authentication setup]	37
Configure the settings of the servers [Server setup]	39
Configuring the network settings [Network setup]	41
Maintenance of the unit [Maintenance]	48
About the Displayed System Log	51
Troubleshooting	53

Preface

About these operating instructions

There are 2 sets of operating instructions for the WJ-NT304 as follows.

- Installation Guide (book, these operating instructions)
- Network operating instructions (PDF)

These operating instructions contain descriptions of how to operate this product using a PC via a network and of how to configure the settings.

Refer to the operating instructions for descriptions of how to install this product and of how to connect to a network. Adobe® Reader is required to read these operating instructions (PDF). When the Adobe® Reader is not installed on the PC, download the latest Adobe® Reader from the Adobe web site and install it.

Trademarks and registered trademarks

- Microsoft, Windows, Internet Explorer, ActiveX, and DirectX are either registered trademarks or trademarks of Microsoft Corporation in the United States and/or other countries.
- Adobe and Reader are either registered trademarks or trademarks of Adobe Systems Incorporated in the United States and/or other countries.
- SD logo is a trademark.
- Other names of companies and products contained in these operating instructions may be trademarks or registered trademarks of their respective owners.

Viewer Software

- Images will not be displayed when the viewer software "Network camera View3" is not installed on the PC. Install the viewer software from the provided CD-ROM.
- The viewer software used on each PC should be licensed individually. Refer to your dealer for the software licensing.

Monitor Images on a PC

The following are descriptions of how to monitor images from the unit on a PC.

Monitor images from a single camera

Step 1

Start up the web browser.

Step 2

Enter the IP address designated using the Panasonic IP setup software in the address box of the browser.
(Example: http://192.168.0.10/)



Important:

- When the HTTP port number is changed from "80", enter "http://IP address of the unit + : (colon) + port number" in the address box of the browser, for example, "http://192.168.0.11:8080".
- When the PC is in a local network, configure the web browser to bypass the proxy server for the local address.

Step 3

Press the [Enter] key on the keyboard.
→ The "Live" page will be displayed.



Important:

Follow the instructions on page 58 when the message is displayed on the information bar of the browser.

Notes:

- When "ON" is selected for "User Authentication", the authentication window will be displayed before displaying live images for the user name and password

entries. The default user name and password are as follows.

User name: admin

Password: 12345

When accessing the unit without changing the default password, the pop-up window saying that it is recommended to change the password will be displayed.

To enhance the security, change the password for the user "admin". It is recommended to change this password periodically. (page 37)

- When "Unicast port (AUTO)" or "Unicast port (MANUAL)" is selected for "Transmission type" (page 25), up to 8 users per channel (up to 16 users for the total of all the channels) can access the unit concurrently. Depending on the set values for "Total bit rate" and "Max bit rate (per 1 client)", the maximum concurrent access number may be limited. When 8 users have been concurrently accessing already, the access limit message will be displayed for users who accessed subsequently.
- When "ON" is selected for "MPEG-4 transmission" (page 25), an MPEG-4 image will be displayed. When "OFF" is selected, a JPEG image will be displayed. It is possible to display JPEG image even when "ON" is selected for "MPEG-4 transmission". In this case, the refresh interval will be lowered to approx. half the set value.

<Refresh interval (JPEG)>

When "ON" is selected for "MPEG-4 transmission"

JPEG (VGA): 15 fps

JPEG (QVGA): 60 fps

These are the total maximum values of all the channels.

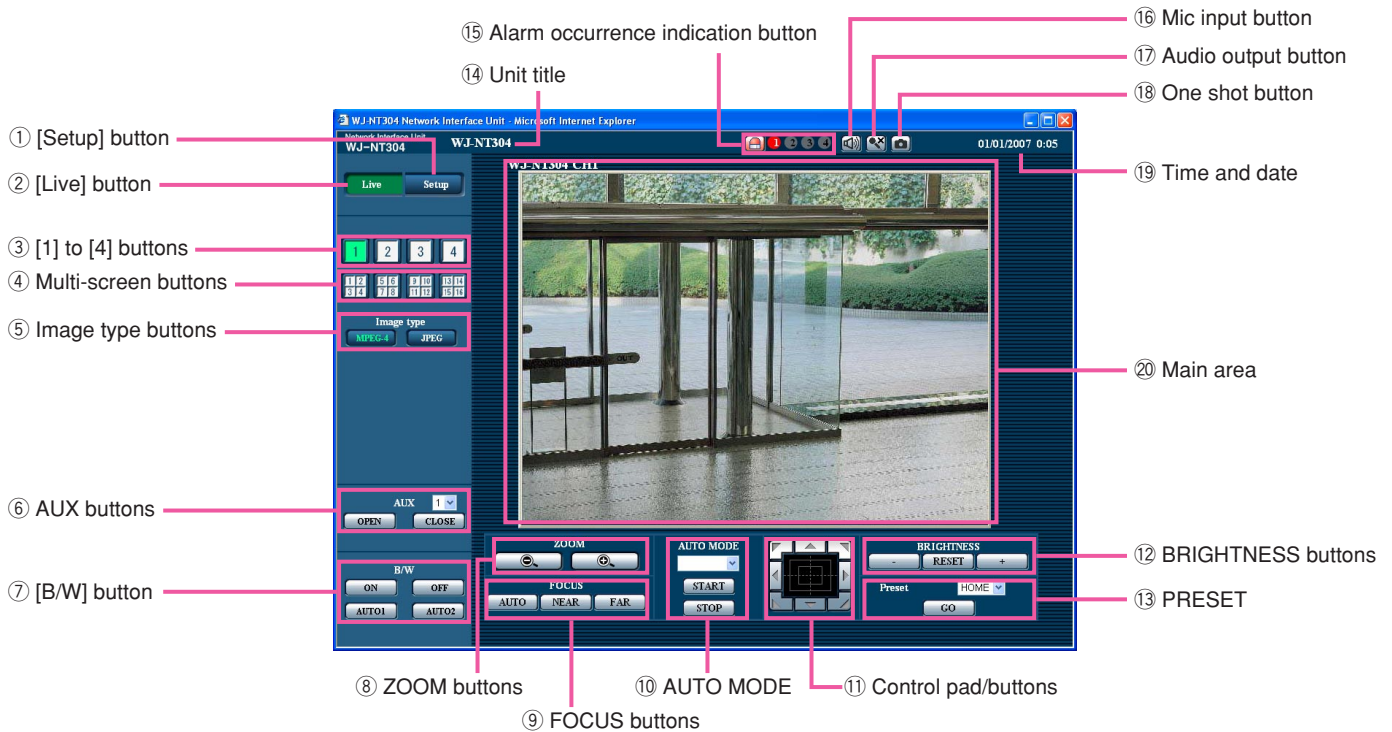
The refresh interval may be longer depending on a network environment, PC spec, photographic subject, access traffic, etc.

Important:

When displaying multiple MPEG-4 images on a PC, images may not be displayed depending on the performance of the PC.

Refer to the next page for further information about the "Live" page.

About the "Live" page



① **[Setup] button (*1)**

Click this button to display the setup menu. The button will turn green and the setup menu will be displayed.

② **[Live] button**

The button will turn green and the "Live" page will be displayed.

③ **[1] to [4] buttons**

Click this button to display the "Live" page. The button will turn green and the "Live" page will be displayed. It is possible to select a desired channel by clicking the [1] to [4] buttons.

④ **Multi-screen buttons**

Images from multiple cameras can be displayed on a multi-screen by registering cameras on the setup menu. (page 8)

⑤ **Image type buttons**

MPEG-4 : The letters "MPEG-4" on the button will turn green and an MPEG-4 image will be displayed. When "OFF" is selected for "MPEG-4 transmission" on the setup menu, the [MPEG-4] button will not be displayed. (page 25)

JPEG : The letters "JPEG" on the button will turn green and JPEG image will be displayed.

⑥ **AUX buttons (*2)**

Select 1 (AUX1) to (AUX3) from the pull-down menu and click the [OPEN/CLOSE] button.


AUX1 and AUX2 are auxiliary outputs of camera. AUX3 is the auxiliary output from the AUX 1 terminal of this unit.


OPEN : The AUX connector will open.


CLOSE : The AUX connector will close.


⑦ **[B/W] button (*2)**

Click the desired button to switch color (colour) of the displayed images between color (colour) and B/W.


 : Images will be displayed in B/W (black and white).


 : Images will be displayed in color (colour).

 : Activates Auto 1 mode. (The camera selects black and white mode if the picture is dark, or color mode if the picture is bright enough.) If the camera has only one AUTO mode, click this button.


 : Activates Auto 2 mode. (The camera detects the light source type to prevent malfunction. This setting is applicable when using a near-infrared light source in a dark place.)


⑧ **ZOOM buttons (*2)**


 : Click this button to adjust the zoom ratio to the WIDE side.

 : Click this button to adjust the zoom ratio to the TELE side.

⑨ **FOCUS buttons (*2)**

 : Click this button to adjust the focus automatically.

 : Click this button to adjust the focus to the NEAR side.

 : Click this button to adjust the focus to the FAR side.

⑩ **AUTO MODE (*2)**

Select an operation from the pull-down menu and click the [START] button. The selected operation will start.

Click the [STOP] button to stop the operation.

The selected operation will stop when the camera (panning/tilting/zooming/focusing) is operated.

Auto pan: Automatically pans between the start position and the end position set in advance.

Even when the camera is operated for zooming or focusing, the camera continues panning.

Sort: Sequentially switches between preset positions counterclockwise, starting from the camera home position.

Sequence: Automatically moves to the preset positions orderly (start from the lowest preset position number).

Patrol: Operates the camera in accordance with patrol function settings.

Note:

To activate auto pan, sort, sequence, or patrol, it is required to perform the settings on the SETUP MENU of camera in advance. (☞ page 28)

⑪ **Control pad/buttons (*2)**



: Left-click on the control pad or buttons to adjust the horizontal/vertical position of the camera (panning/tilting). Panning/tilting speed will be faster if a clicked point gets farther from the center point of the control pad.


It is also possible to pan/tilt the camera by dragging the mouse.

When the upper half area of the control pad is right-clicked, the displayed image will be zoomed in.

When the lower half area is right-clicked, the displayed image will be zoomed out on. When the left half area is right-clicked, the focus will be adjusted to the FAR side. When the right half area is right-clicked, the focus will be adjusted to the NEAR side.

⑫ **BRIGHTNESS buttons (*2)**

 : The displayed image will be darker.

 : The adjusted brightness will return to the default brightness.:

 : The displayed image will be brighter.

Note:

When the BRIGHTNESS buttons are clicked while the camera is at the preset position, the adjusted brightness will automatically be registered for the current preset position.

⑬ **PRESET (*2)**

Select a preset position from the pull-down menu and click the [GO] button. The camera will move to the selected preset position. When "Home position" is selected, the camera will move to the home position.

To activate preset positions and home position, it is required to configure the settings on the SETUP MENU of camera in advance. (☞ page 28)


⑭ **Unit title**

The unit title entered for "Unit title" on the [Basic] tab will be displayed. (☞ page 18)

⑮  **Alarm occurrence indication button (*2)**

This button will be displayed at an alarm occurrence, and the channel of alarm occurrence (one of [1] to [4] buttons) will light. When the button is clicked, the button will disappear and the alarm output connector will be reset. (☞ page 34)

⑯  **Mic input button (*3)**

Turns on/off the audio reception (hear audio from the unit on a PC). This button will be displayed only when "Mic input" or "Interactive" is selected for "Audio mode" on the setup menu. (☞ page 29)
When this button is clicked, the button will turn into the  button and audio from the unit will not be heard.


Note:

When this button is clicked, audio from the PC will be turned off.
When closing the window, click the button again to turn on the audio.

⑰  **Audio output button (*3)**

Turns on/off the audio transmission (play audio from the PC on the unit speaker). This button will be displayed only when "Audio output" or "Interactive" is selected for "Audio mode" on the setup menu. (☞ page 31)

The button blinks while the audio transmission is being carried out.

When this button is clicked, the button will turn into the  button and audio from the PC will not be heard.

Notes:

- When a user is using the audio transmission function, the mic input button and the audio output button will be inoperable for the other users.
 - Possible duration of audio transmission is up to 5 minutes per transmission. When 5 minutes have passed, the audio transmission function will be canceled and the audio reception function will automatically be turned on. To turn the audio transmission function on, click the audio output button again.
-

⑱  **One shot button**

Click this button to take a picture (a still picture). The picture will be displayed on a newly opened window. The picture will be displayed on a newly opened window. When right-clicking on the displayed image, the pop-up menu will be displayed. The displayed image can be saved on the PC by selecting "Save" from the pop-up menu.

⑲ **Time and date**

Current time will be displayed in the set date/time display format (☞ page 18).

⑳ **Main area (*2)**

Images from the camera will be displayed in this area.

Click a desired point in the main area on the "Live" page that is to be the centre of the angle of view. The camera moves to adjust the position in order to set the clicked point as the centre.

Note:

When using this function, set "PROPO.P/T" of camera to ON. (☞ page 28)
The following cameras are available for the function. WV-CS950 series, WV-CW960 series, WV-CW970 series (as of January 2007)

- *1 Operable by only users and hosts whose access level is "1. Administrator"
- *2 Only operable by users and hosts whose access level is "1. Administrator" or "2. Camera control" when "ON" is selected for "User authentication" (☞ page 37) and "Host authentication" (☞ page 38).
- *3 Operable by users and hosts who belong to the access level selected for "Authentication" on the [Audio] tab of the "Camera setup" page. (☞ page 30)

Refer to page 37 for further information about the access level.

Important:

It is impossible to display images and to receive/transmit audio between the unit and the PC when the viewer software "Network Camera View3" is not installed on the PC. (Refer to the operating instructions for descriptions of how to install.)

Monitor images from multiple cameras

Images from multiple cameras can be displayed on a multi-screen. Images from 4 cameras can be displayed simultaneously. To display images on a multi-screen, it is necessary to register cameras in advance. 4 cameras can be registered as a group and up to 4 groups (16 cameras) can be registered. (page 31)

Important:

- Select "OFF" for both the user authentication and the host authentication of the network device to be registered.
- Only JPEG images can be displayed on a multi-screen. Audio will not be heard.
- Multi-screen is the function that is available using this unit.

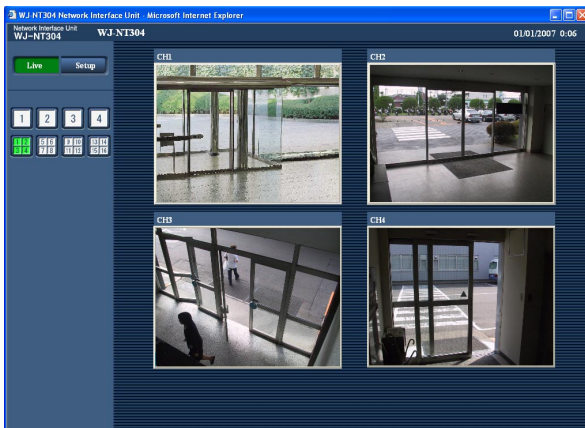
When the power is turned off or the LAN cable is disconnected while displaying images, displaying images on a multi-screen will become unavailable.

Step 1

Click the [Multi-screen] button.

→ Images from the registered cameras will be displayed on a 4-split screen.

- ① To display images on a single screen, click the the [1] button or [Live] button.
- ② Click a camera title. Live images from the camera corresponding to the clicked camera title will be displayed on the "Live" page of the newly opened window.



Action at an Alarm Occurrence

The alarm action will be performed when the following alarm occur.

Alarm type

Terminal alarm: When connecting an alarm device such as a sensor to the connector terminal (Alarm Input 1 to 4) on the rear of the unit, the alarm action (unit action at an alarm occurrence) will be performed when the connected alarm device is activated. Alarm action to be performed differs depending on the settings configured on the [Alarm] tab. (☞ page 32)

Camera site alarm: When a camera connected to a VIDEO IN connector detects an alarm by alarm sensors or cameras' motion detectors, etc., and the unit receives the alarm input signal from the camera, the alarm action will be performed. (☞ page 32)

Video Loss: When the loss of video input signals is detected due to coaxial cable disconnections or camera troubles, the alarm action will be performed. (☞ page 32)

Command alarm: When a Panasonic alarm protocol is received from the connected device via a network, the alarm action will be performed. (☞ page 32)

Action at an Alarm Occurrence

Display the [Alarm occurrence indication] button on the "Live" page (☞ page 5).

The [Alarm occurrence indication] button will be displayed on the "Live" page at an alarm occurrence.

Note:

The [Alarm occurrence indication] button will be refreshed in 30 seconds intervals. For this reason, it may take a maximum of 30 seconds until the [Alarm occurrence indication] button is displayed on the "Live" page at an alarm occurrence.

Notify of alarm occurrences to the device connected to the alarm connector

It is possible to output signals from the alarm connector on the rear of the unit and sound the buzzer when an alarm occurs. The settings for the alarm output can be configured on the [Alarm] tab of the "Alarm setup" page. (☞ page 32)

Transmit an image onto a server automatically

An alarm image can be transmitted at an alarm occurrence to the server designated in advance. The settings required to transmit an alarm image to a server can be configured in the "Alarm image setup" section of the [Alarm] tab of the "Alarm setup" page (☞ page 33) and the [FTP] tab of the "Server setup" page (☞ page 40).

Notify of alarm occurrences by e-mail

Alarm mail (alarm occurrence notification) can be sent at an alarm occurrence to the e-mail addresses registered in advance. Up to 4 addresses can be registered as recipients of the alarm mail. The settings for alarm mail can be configured in the "E-mail notification setup" section of the [Notification] tab of the "Alarm setup" page (☞ page 35) and the [Mail] tab of the "Server setup" page (☞ page 40).

Notify of alarm occurrences to the designated IP addresses (Panasonic alarm protocol)

This function is available only when Panasonic device, such as the network disk recorder, is connected to the system. When "ON" is selected for "Panasonic alarm protocol", the connected Panasonic device will be notified that the unit is in the alarm state. The settings for Panasonic alarm protocol can be configured on the [Notification] tab of the "Alarm setup" page. (☞ page 36)

Transmit Images onto an FTP Server

Images can be transmitted to an FTP server. By configuring the following settings, transmission of images captured at an alarm occurrence or captured at a designated interval to an FTP server will become available.

Important:

When using this function, set the user name and the password to access the FTP server to restrict users who can log into the FTP server.

Transmit an alarm image at an alarm occurrence (Alarm image FTP transmission)

An alarm image can be transmitted at an alarm occurrence to the FTP server. To transmit alarm images to an FTP server, it is necessary to configure the settings in advance.

The settings for the FTP server can be configured on the [FTP] tab of the "Server setup" page. (☞ page 40)

The alarm image FTP transmission function can be turned on/off on the [Alarm] tab of the "Alarm setup" page.

(☞ page 34)

Note:

Depending on the network traffic, number of the transmitted images may not reach the set number of images to be transmitted.

Transmit images at a designated interval or period (FTP periodic transmission)

Images can be transmitted at a designated interval or period. To transmit images at a designate interval or period, it is necessary to configure the settings in advance.

The settings for the FTP server to which images are to be transmitted can be configured on the [FTP] tab of the "Server setup" page. (☞ page 40)

On the [FTP] tab of the "Network setup" page, the FTP periodic transmission function can be turned on/off, and the settings relating to schedules (periods) can be configured. (☞ page 46)

Notes:

- Depending on the network line speed or the network traffic, images may not be transmitted at the exact designated interval or period.
 - When "ON" is selected for both of the alarm image FTP transmission function and the FTP periodic transmission function, the alarm image FTP transmission function will be given priority over the FTP periodic transmission function. For this reason, images may not be transmitted at the exact designated interval or period if alarms occur frequently.
-

Save images on the SD memory card when failed to transmit images by the FTP periodic transmission function

Images that have failed to transmit using the FTP periodic transmission can be saved automatically on the SD memory card.

When using the "SD memory REC" function of a Panasonic's network disk recorder, select "OFF" for the "FTP periodic transmission" function. (☞ page 46) Refer to the operating instructions of network disk recorder for further information.

We make no guarantee for any damages of files on the SD memory card incurred by malfunction or error occurrence in files saved on the SD memory card regardless of what the cause may be.

Possible capacity of images that can be saved on the SD memory card will be different depending on the number of selected channels (☞ page 24), image capture size (☞ page 25), and image quality (☞ page 25).

When using an SD memory card, it is recommended to check the recording condition and select "5 sec" or longer for "Interval" on the [FTP] tab. (☞ page 46)

Save images on the SD memory card

By selecting "Use" for "About SD memory card" on the [SD memory card] tab of the "Basic setup" page (☞ page 21), saving images which had been failed to transmit to the FTP server using the FTP periodic transmission function will become available.

Obtain images on the SD memory card

Step 1

Access the unit using the Windows command prompt or FTP client software.

→ The window with the user name and password entry fields will be displayed.

On the FTP server, only access the "sd_data" directory.

Note:

When accessing this unit via the FTP server, select "Allow" for "FTP access" on the [Network] tab of the "Network setup" page. (☞ page 42)

Step 2

Enter the user name whose access level is "1. Administrator" and its password.

→ Log in the unit.

Note:

The default user name with the access level "1. Administrator" and its password are as follows.

User name: admin

Password: 12345

To enhance the security, it is recommended to change the password for the administrator periodically.

(☞ page 37)

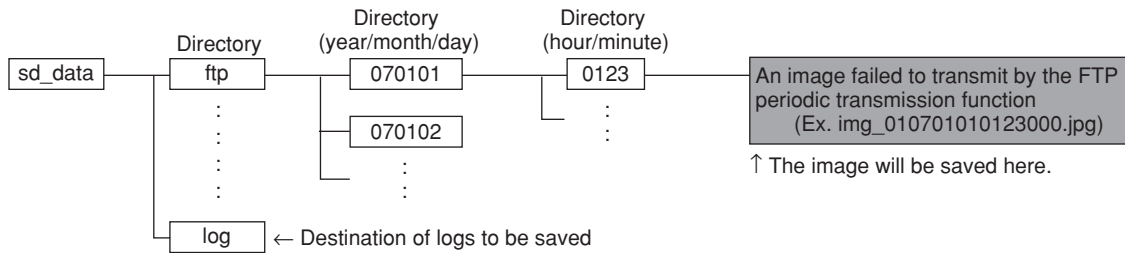
Step 3

Move the current directory to "sd_data" and obtain images.

Note:

- When logging in the unit, each directory will be displayed. Images on the SD memory card can be found in the "sd_data" directory. Move to the "sd_data" directory and obtain images.

<Directory structure of "sd_data">



To obtain the image (img_0107010101230000.jpg) using the Windows command prompt

- ① Enter "c:\>ftp 192.168.0.10" and press the [Enter] key.
FTP connection will be established with "192.168.0.10".
- ② Log in by entering the user name and the password.
- ③ Enter "ftp> cd sd_data/ftp/070101/0123" and press the [Enter] key.
→ The current directory will be "sd_data/070101/0123".
- ④ The transfer mode will be set to the binary mode. Enter "ftp> bin" and press the [Enter] key.
- ⑤ Obtain the image. Enter "ftp> get img_0107010101230000.jpg" and press the [Enter] key.
→ The image will be obtained.
- ⑥ Log out by entering "ftp> bye" and press the [Enter] key.
→ You will log out of the "FTP" directory.

- It is possible to delete images on the SD memory card using the Windows command prompt, etc.

About the Network Security of This Unit

Equipped security functions

The following security functions are featured in this unit.

① **Access restrictions by the host authentication and the user authentication**

It is possible to restrict users from accessing the unit by setting the host authentication and/or the user authentication to on. (☞ pages 37 and 38)

② **Access restrictions by changing the HTTP port**

It is possible to prevent illegal access such as port scanning, etc. by changing the HTTP port number. (☞ page 42)

Note:

When user authentication (authentication error) has failed to pass 8 times (6 times when clicking the [Go] button of the browser) within 5 minutes using the same IP address (PC), access to the unit will be denied for a while.

Important:

Design and enhance security countermeasures to prevent leakage of information such as image data, authentication information (user name and password), alarm mail information, FTP server information, DDNS server information, etc.

Display the Setup Menu and Configure the Settings of the Unit using a PC

The settings of the unit can be configured on the setup menu.

The setup menu is only operable by users whose access level is "1. Administrator".

How to display the setup menu

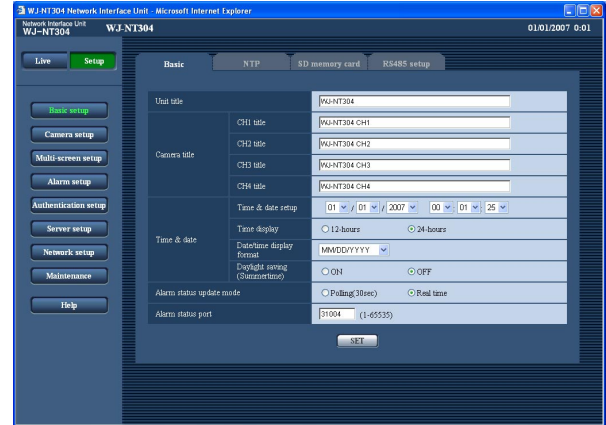
Step 1

Display the "Live" page. (Refer to page 4)

Step 2

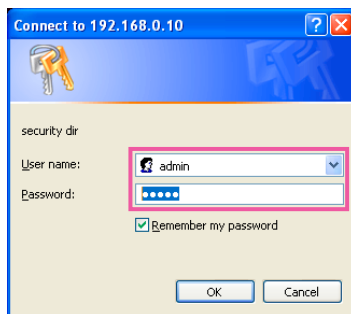
Click the [Setup] button on the "Live" page.

→ The window with the user name and password entry fields will be displayed.



Step 3

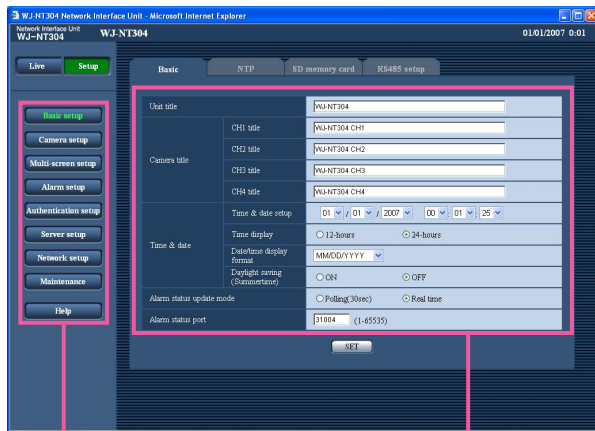
Click the [OK] button after entering the user name and the password. (Refer to page 4 for the default user name and password.)



→ Click this button to display the setup menu.

Refer to the next page for further information about this menu.

How to operate the setup menu



Menu button

Setup page

Step 1

Click the desired button in the frame on the left of the window to display the respective setup menu. When there are tabs at the top of the setup page displayed in the frame on the right of the window, click the desired tab to display and configure the setting items relating to the name of the tab.

Step 2

Complete each setting item displayed in the frame on the right of the window.

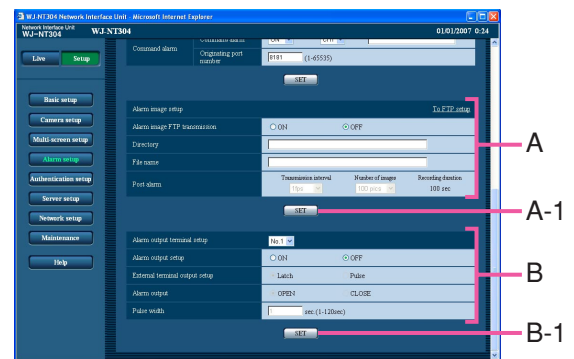
Step 3

After completing each setting item, click the [SET] button to apply them.

Important:

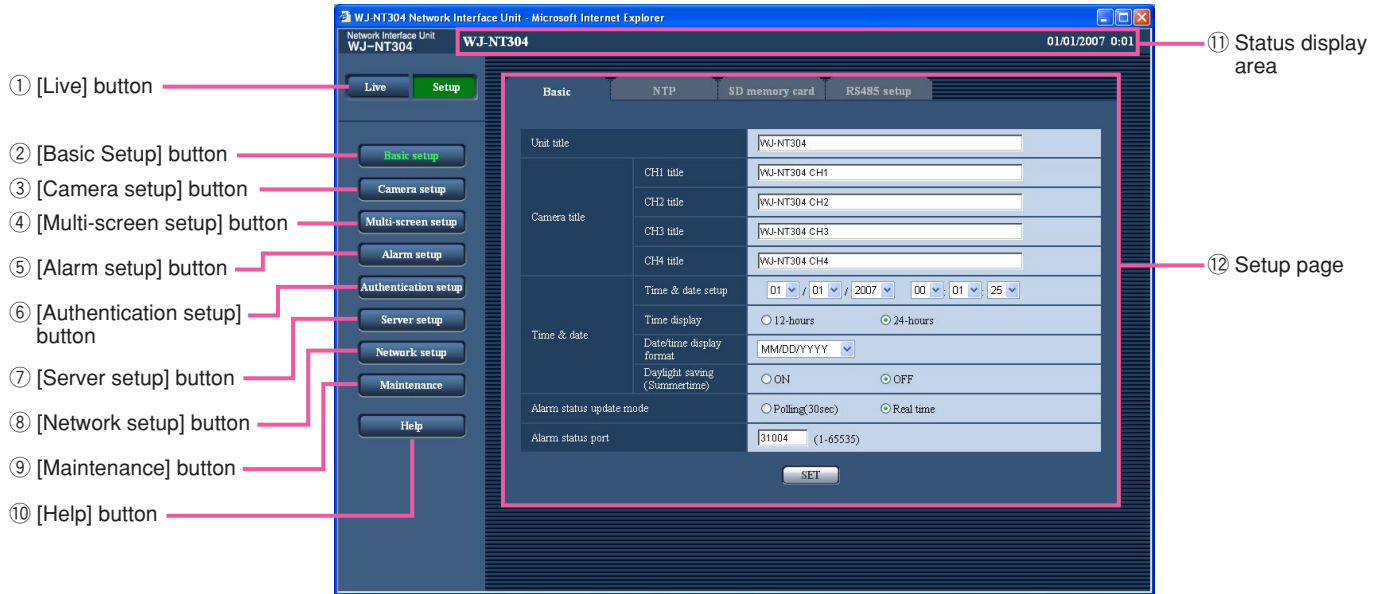
When there are two [SET] buttons (or [REG] buttons) or more on the page, click the respective button to the edited setting item.

<Example>



When completing the setting items in field A, click the [SET] button below field A (A-1). The edited setting items in field A will not be applied unless the [SET] button below field A (A-1) is clicked. In the same manner as above, click the [SET] button below field B (B-1) when completing the setting items in field B.

About the operation window



① **Live** [Live] button

The "Live" page will be displayed.

② **Basic setup** [Basic setup] button

Click this button to display the "Basic setup" page. The basic settings such as time and date and camera title, and the settings relating to the NTP server and the SD memory card can be configured on the "Basic setup" page. Refer to page 18 for further information.

③ **Camera setup** [Camera setup] button

Click this button to display the "Camera setup" page. The settings relating to JPEG/MPEG-4 images and camera operation can be configured on the "Camera setup" page. Refer to page 24 for further information.

④ **Multi-screen setup** [Multi-screen setup] button

Click this button to display the "Multi-screen setup" page. The cameras to be used for the multi-screen display can be registered on the "Multi-screen setup" page. Refer to page 31 for further information.

⑤ **Alarm setup** [Alarm setup] button

Click this button to display the "Alarm setup" page. The settings relating to alarm occurrences such as settings for the alarm action at an alarm occurrence, the alarm occurrence notification, and the VMD area settings can be configured on the "Alarm setup" page. Refer to page 32 for further information.

⑥ **Authentication setup** [Authentication setup] button

Click this button to display the "Authentication setup" page. The settings relating to the authentication such as users and PCs restrictions for accessing the unit can be configured on the "Authentication setup" page. Refer to page 37 for further information.

⑦ **Server setup** [Server setup] button

Click this button to display the "Server setup" page. The settings relating to the mail server and the FTP server to which the unit accesses can be configured on the "Server setup" page. Refer to page 36 for further information.

-
- ⑧ **Network setup** **[Network setup] button**
Click this button to display the "Network setup" page. The network settings and the settings relating to DDNS (Dynamic DNS), SNMP (Simple Network management Protocol) and FTP (File Transfer Protocol) can be configured on the "Network setup" page. Refer to page 41 for further information.
- ⑨ **Maintenance** **[Maintenance] button**
Click this button to display the "Maintenance" page. System log check, firmware upgrade and initialization of the setup menu can be carried out on the "Maintenance" page. Refer to page 48 for further information.
- ⑩ **Help** **[Help] button**
Click this button to display the "Help" page.
- ⑪ **Status display area**
The name of the unit whose settings currently being configured, and date and time will be displayed.
- ⑫ **Setup page**
Pages of each setup menu will be displayed. There are tabs for some setup menus.

Configure the basic settings of the unit [Basic setup]

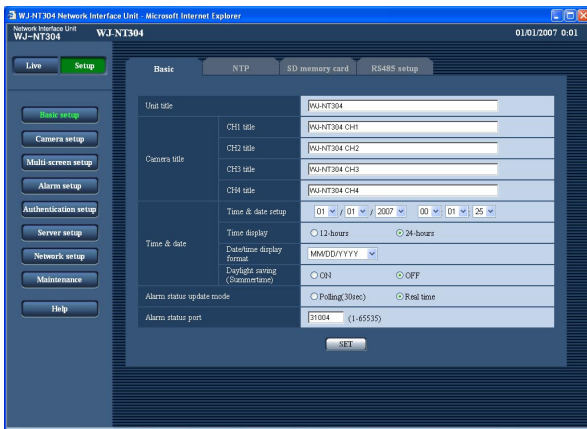
The basic settings such as time and date and unit name, and the settings relating to the NTP server and the SD memory card can be configured on the "Basic setup" page.

The "Basic setup" page has 4 tabs of the [Basic] tab, the [NTP] tab, [SD memory card] tab, and the [RS485 setup] tab.

Configure the basic settings [Basic]

Click the [Basic] tab on the "Basic setup" page.

The settings such as the unit name, time and date, etc. can be configured on this page.



[Unit title]

Enter the title of the unit. Click the [SET] button after entering the title of the unit. The entered title will be displayed in the status display area.

Number of characters that can be entered: 0 - 20 characters

Default setting: WJ-NT304

[Camera title]

Enter the names of the cameras connected to VIDEO IN connectors. The entered names will be displayed in the status display area.

Number of characters that can be entered: 0 - 20 characters

Default setting: Name of CH1: WJ-NT304 CH1
Name of CH2: WJ-NT304 CH2
Name of CH3: WJ-NT304 CH3
Name of CH4: WJ-NT304 CH4

[Time & date setup]

Enter the current time and date. When "12-hours" is selected for "Date/time display format", "AM" or "PM" can be selected.

Available value: 01/01/2006 00: 00: 00 -
12/31/2035 23: 59: 59

[Time display]

Select the time display format from "12-hours", "24-hours" and "OFF". Enter the current hour reflecting this setting when entering the current time and date for "Time & date setup".

Default setting: 12-hours (NTSC model)
24-hours (PAL model)

[Date/time display format]

Select a date/time display format.

When "04/01/2007 13: 10: 00" is set for "Time and date setup" after selecting "24-hours" for "Date/time display format", time and date will be displayed as follows respectively.

DD/MM/YYYY: Apr/01/2007 13: 10

MM/DD/YYYY: Apr/01/2007 13: 10

DD/Mmm/YYYY: Apr/01/2007 13: 10

YYYY/MM/DD: Apr/01/2007 13: 10

Mmm/DD/YYYY: Apr/01/2007 13: 10

Default setting: Mmm/DD/YYYY (NTSC model)
DD/MM/YYYY (PAL model)

[Daylight saving (Summertime)]

Select "ON" or "OFF" to determine whether or not to apply daylight saving time. Select "ON" or "OFF" to determine whether or not to apply daylight saving time.

ON: Applies summer time. An asterisk (*) will be displayed on the left side of the displayed time and date.

OFF: Does not apply summer time.

Default setting: OFF

[Alarm status update mode]

Select an interval to notify the unit status (alarm status, audio status, etc.) from the following.

When the status of the unit changes, the alarm occurrence indication button, the mic input button, or the audio output button will be displayed to notify of the unit status.

Polling (30 sec): Updates the status each 30 seconds and provide notification of the unit status.

Real time: Provide notification of the unit status when the status has changed. (Except the alarm occurrence indication button)

Default setting: Real time

Important:

When using Windows® 2000 Professional SP4, even when "Real time" is selected, the actual interval will be 30 seconds. This is a normal operation.

Note:

Depending on the network environment, notification may not be provided in real time.

[Alarm status port]

When selecting "Real time" for "Alarm status update mode", designate a port number to which the status change notification is to be sent.

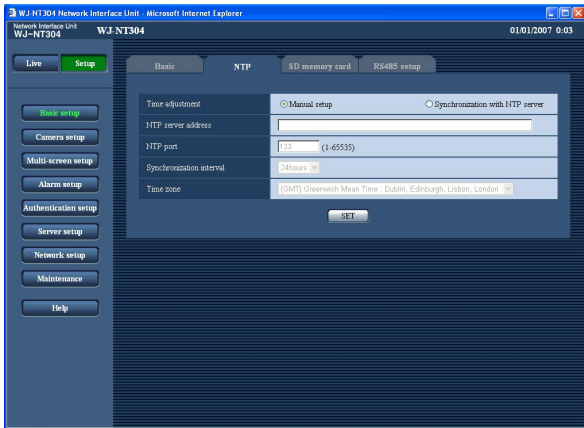
Available value: 1 - 65535

Default setting: 31004

Configure the settings relating to the NTP server [NTP]

Click the [NTP] tab on the "Basic setup" page. (☞ page 18)

The settings relating to the NTP server such as the NTP server address, port number, etc. can be configured on this page.



[Time zone]

Select a time zone according to the location where the unit is in use.

Default setting: (GMT) Greenwich Mean Time: Dublin, Edinburgh, Lisbon, London

[Time adjustment]

Select the time adjustment method from the following.

Manual setup: Time set on the [Basic] tab on the "Basic setup" page will be used as the standard time of the unit.

Synchronization with NTP server: Time automatically adjusted by synchronizing with NTP server will be used as the standard time of the unit.

Default setting: Manual setup

[NTP server address]

Enter the IP address or the host name of the NTP server.

Number of characters that can be entered: 1 - 128 characters

Default setting: (blank)

Important:

When entering the host name for "NTP server address", it is necessary to configure the DNS settings on the [Network] tab of the "Network setup" page. (☞ page 42)

[NTP port]

Enter a port number to be used for the NTP server.

Available port number: 1 - 65535

Default setting: 123

[Synchronization interval]

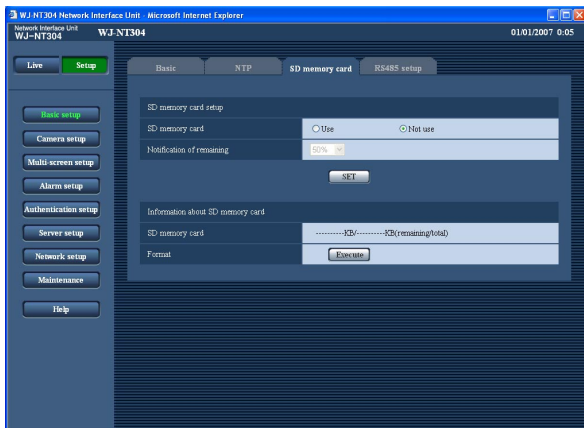
Select an interval (1 - 24 hours: in 1 hour intervals) of synchronization with the NTP server.

Default setting: 1 hour

Configure the settings relating to SD memory card [SD memory card]

Click the [SD memory card] tab on the "Basic setup" page. (☞ page 18)

The settings relating to the SD memory card can be configured on this page.



■ SD memory card setup

[SD memory card]

Select "Use" or "Not use" to determine whether or not to use the SD memory card.

Default setting: Not use

Important:

- When the power is shut down while saving images on the SD memory card because of power failure, etc., SD memory card or the contents of card may be destroyed.
(When using an SD memory card, it is recommended to use an UPS (uninterruptible power equipment).)
- Before removing the SD memory card from the unit, it is necessary to select "Not use" first.
- Before inserting a SD memory card into the SD memory card slot, turn the power of the unit off. (☞ Operating Instructions) After inserting the SD memory card, it is necessary to select "Use" to use the SD memory card.

[Notification of remaining]

When the "Panasonic alarm protocol" function is used to provide notification of the remaining space of the SD memory card, select a level to be notified at from the following.

50 %/20 %/10 %/5 %/2 %

Default setting: 50 %

Note:

Notification will be provided when the remaining space of the SD memory card reached the values above.

For example, notification will be provided for the destination IP address when the remaining space reaches 50 % or less when "50%" is selected. (☞ page 36)

Notification may not always be made at the very moment when the remaining space of the SD memory card has reached each value.

■ Information about SD memory card

[SD memory card]

Available size and the total size of the SD memory card will be displayed.

Depending on the state of the SD memory card, the size indications will differ as follows.

Content	Description
-----KB/-----KB	No SD memory card is inserted. Failed to obtain available size due to error, etc.
*****KB/*****KB	The SD card memory is unformatted, or locked, etc.

Note:

When the available size reached "0 KB", images will not be saved on the SD memory card.

When the notification function is on, a notification mail will be sent to the registered addresses when the SD memory card becomes full. (☞ page 36)

[Format]

To format the SD memory card, click the [Execute] button.

Important:

- Before formatting the SD memory card, it is necessary to select "Use" for "SD memory card" on the [SD memory card] tab of the "Basic setup" page (☞ page 21) and "OFF" for "FTP periodic transmission" on the [FTP] tab of the "Network setup" page (☞ page 46).
 - Format the SD memory card only by clicking the [Execute] button on the setup menu. Otherwise, the following functions using the SD memory card may not work properly with this unit.
 - Save/obtain images when failed to transmit to the FTP server using the FTP periodic transmission function
 - Save/obtain the system logs
 - Save/obtain images recorded using the SD memory recording function of Panasonic's network disk recorder.
 - It is impossible to format the SD memory card in the process of accessing, for example, when writing images on the SD memory card or during the FTP access.
- It is impossible to access the SD memory card in the process of formatting.
 - All data saved on the SD memory card will be deleted when the SD memory card is formatted.
 - Do not turn the power of the unit off in the process of formatting.
 - After formatting the SD memory card, available size may be smaller than the total size since the default directory is automatically created in the SD memory card. After formatting the SD memory card, available size/total size will be refreshed when the window is refreshed.
 - Compatible SD memory card is as follows.
SD memory card manufactured by Panasonic (64 MB, 128 MB, 256 MB, 512 MB, 1 GB, 2GB) (SDHC memory card is not supported.)
 - Depending on the remaining space of the SD memory card, it may take around 30 seconds to format the card.
-

Possible number of images that can be saved on the SD memory card (as indications)

Important:

They are not actual numbers of images that can be saved on the SD memory card. Numbers will differ according to photographic subject, settings relating to the SD memory card, etc.

Image capture size: VGA

Size of SD memory card	Image quality				
	0 (Super fine)	1 (Fine)	2	3	4
2 GB	Approx. 10 000 pics	Approx. 14 000 pics	Approx. 16 000 pics	Approx. 18 000 pics	Approx. 20 000 pics
1 GB	Approx. 5 000 pics	Approx. 7 000 pics	Approx. 8 000 pics	Approx. 9 000 pics	Approx. 10 000 pics
512 MB	Approx. 2 500 pics	Approx. 3 500 pics	Approx. 4 000 pics	Approx. 4 500 pics	Approx. 5 000 pics
256 MB	Approx. 1 250 pics	Approx. 1 750 pics	Approx. 2 000 pics	Approx. 2 250 pics	Approx. 2 500 pics
128 MB	Approx. 625 pics	Approx. 875 pics	Approx. 1 000 pics	Approx. 1 125 pics	Approx. 1 250 pics
64 MB	Approx. 312 pics	Approx. 437 pics	Approx. 500 pics	Approx. 562 pics	Approx. 625 pics
Size of SD memory card	Image quality				
	5 (Normal)	6	7	8	9 (Low)
2 GB	Approx. 22 000 pics	Approx. 26 000 pics	Approx. 28 000 pics	Approx. 30 000 pics	Approx. 32 000 pics
1 GB	Approx. 11 000 pics	Approx. 13 000 pics	Approx. 14 000 pics	Approx. 15 000 pics	Approx. 16 000 pics
512 MB	Approx. 5 500 pics	Approx. 6 500 pics	Approx. 7 000 pics	Approx. 7 500 pics	Approx. 8 000 pics
256 MB	Approx. 2 750 pics	Approx. 3 250 pics	Approx. 3 500 pics	Approx. 3 750 pics	Approx. 4 000 pics
128 MB	Approx. 1 375 pics	Approx. 1 625 pics	Approx. 1 750 pics	Approx. 1 875 pics	Approx. 2 000 pics
64 MB	Approx. 687 pics	Approx. 812 pics	Approx. 875 pics	Approx. 937 pics	Approx. 1 000 pics

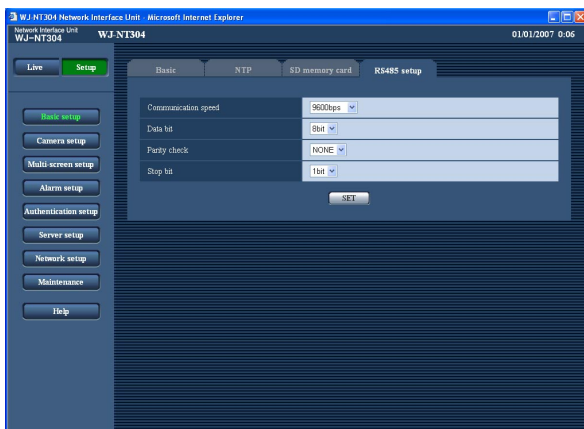
Image capture size: QVGA

Size of SD memory card	Image quality				
	0 (Super fine)	1 (Fine)	2	3	4
2 GB	Approx. 24 000 pics	Approx. 26 000 pics	Approx. 27 000 pics	Approx. 28 000 pics	Approx. 30 000 pics
1 GB	Approx. 12 000 pics	Approx. 13 000 pics	Approx. 13 500 pics	Approx. 14 000 pics	Approx. 15 000 pics
512 MB	Approx. 6 000 pics	Approx. 6 500 pics	Approx. 6 750 pics	Approx. 7 000 pics	Approx. 7 500 pics
256 MB	Approx. 3 000 pics	Approx. 3 250 pics	Approx. 3 375 pics	Approx. 3 500 pics	Approx. 3 750 pics
128 MB	Approx. 1 500 pics	Approx. 1 625 pics	Approx. 1 687 pics	Approx. 1 750 pics	Approx. 1 875 pics
64 MB	Approx. 750 pics	Approx. 812 pics	Approx. 843 pics	Approx. 875 pics	Approx. 937 pics
Size of SD memory card	Image quality				
	5 (Normal)	6	7	8	9 (Low)
2 GB	Approx. 32 000 pics	Approx. 36 000 pics	Approx. 38 000 pics	Approx. 40 000 pics	Approx. 42 000 pics
1 GB	Approx. 16 000 pics	Approx. 18 000 pics	Approx. 19 000 pics	Approx. 20 000 pics	Approx. 21 000 pics
512 MB	Approx. 8 000 pics	Approx. 9 000 pics	Approx. 9 500 pics	Approx. 10 000 pics	Approx. 10 500 pics
256 MB	Approx. 4 000 pics	Approx. 4 500 pics	Approx. 4 750 pics	Approx. 5 000 pics	Approx. 5 250 pics
128 MB	Approx. 2 000 pics	Approx. 2 250 pics	Approx. 2 375 pics	Approx. 2 500 pics	Approx. 2 625 pics
64 MB	Approx. 1 000 pics	Approx. 1 125 pics	Approx. 1 187 pics	Approx. 1 250 pics	Approx. 1 312 pics

Configure the settings relating to the RS-485 port [RS485 setup]

Click the [RS485 setup] tab on the "Basic setup" page. (page 18)

The settings relating to the RS-485 port such as the communication speed can be configured on this page.



[Parity check]

Select the parity check method for RS-485 port from the following.

NONE: Parity check is not performed.

ODD: Parity check is performed for odd parity bits.

EVEN: Parity check is performed for even parity bits.

Default setting: NONE

[Stop bit]

Select "1 bit" or "2 bit" to determine the stop bit for the RS-485 port.

Default setting: 1 bit

[Communication speed]

Select the communication speed for RS-485 port from the following.

9600/19200/38400 bps

Default setting: 38400 bps

[Data bit]

Select "7 bit" or "8 bit" to determine the data bit for the RS-485 port.

Default setting: 8 bit

Configure the settings relating to images and audio [Camera setup]

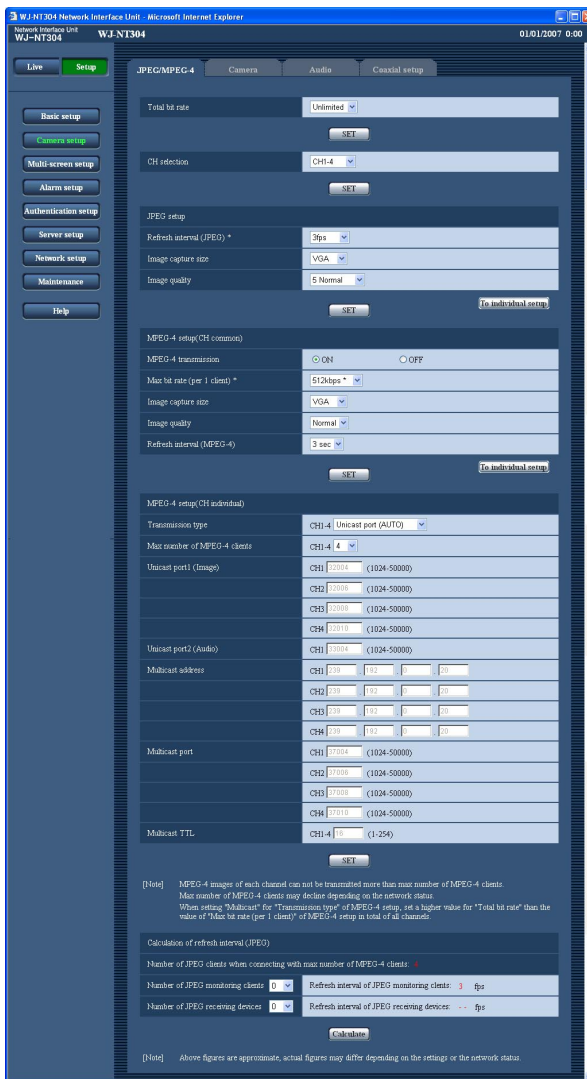
The settings relating to JPEG/MPEG-4 images and camera operation can be configured on the "Camera setup" page.

The "Camera setup" page has 4 tabs of the [JPEG/MPEG-4] tab, the [Camera] tab, [Audio] tab and the [Coaxial setup] tab.

Configure the settings relating to MPEG-4 image [JPEG/MPEG-4]

Click the [JPEG/MPEG-4] tab on the "Camera setup" page.

Configure the settings relating to MPEG-4 image such as "Max bit rate (per 1 client)", "Image capture size", "Image quality", etc. in this section. These settings are common among each channel. To configure each channel setting individually, press [To individual setup] button.



[Total bit rate]

Select the total bit rate for data transmission from the followings.

Unlimited/64 kbps/128 kbps/256 kbps/512 kbps/1024 kbps/2048 kbps/4096 kbps

Default setting: Unlimited

Notes:

- When selecting "64 kbps", select "OFF" for "Audio mode" on the "Audio" tab. (page 29)
- When "64 kbps" or "128 kbps" is selected, do not carry out the live-transmission of JPEG images and the FTP periodic transmission simultaneously.
- Even when "Unlimited" is set for "Total bit rate", image data whose total size is 20 Mbps or more may be destroyed during transmission.
- The actual total bit rate may be approx. twice the set value when MPEG-4 transmission is carried out in combination with JPEG transmission or FTP transmission.

[CH selection]

Select the channel number of VIDEO IN connector from the following.

CH1 only/CH1-2/CH1-3/CH1-4

Default setting: CH1-4

Important:

The set values of JPEG setup and MPEG-4 setup are common among each channel.

■ JPEG setup

[Refresh interval (JPEG)]

Select an interval to refresh the displayed JPEG image from the following.

NTSC model: 0.1 fps/0.2 fps/0.33 fps/0.5 fps/1 fps/2 fps/3 fps/5 fps */6 fps */10 fps */15 fps */30 fps *

Default setting: 3 fps

PAL model: 0.08 fps/0.17 fps/0.28 fps/0.42 fps/0.83 fps/1.7 fps/2.5 fps/4.2 fps */5 fps */8.3 fps */12.5 fps */25 fps *

Default setting: 2.5 fps

Notes:

- Depending on the setting value of "CH selection", "MPEG-4 transmission", "Image capture size" of JPEG setup, or "Image quality" of JPEG setup, the refresh interval may be lower than the value when the setting value with an asterisk (*) on the right is selected. (☞ page 27)
- JPEG images are not encoded exceeding the setting value of "Refresh interval (JPEG)". (At least 3fps is secured.)

When a connected device requests an exceeding value, change the setting value of "Refresh interval (JPEG)".

[Image capture size]

Select "VGA (640 x 480)" or "QVGA (320 x 240)" for the image capture size of JPEG images.

Default setting: VGA (640 x 480)

[Image quality]

Select image quality of JPEG images from the following. 0 Super fine/1 Fine/2/3/4/5 Normal/6/7/8/9 Low

Default setting: 5 Normal

Note:

The set values of "Image capture size" and "Image quality" of JPEG setup will be common between a still picture (one shot), the alarm image FTP transmission, and the FTP periodic transmission.

[To individual setup] button

Moves to the individual setup page. (☞ page 27)

■ **[MPEG-4 setup (CH common)]**

[MPEG-4 transmission]

Select "ON" or "OFF" to determine whether or not to transmit MPEG-4 images.

ON: Transmits MPEG-4 images.

OFF: Does not transmit MPEG-4 images.

Default setting: ON

Note:

When "ON" is selected for "MPEG-4" transmission, displaying rather of MPEG-4 image or JPEG image will be available. However, the refresh interval (JPEG) may be longer than the set value when displaying JPEG images.

[Max bit rate (per 1 client)]

Select a MPEG-4 bit rate per a client from the following. 64 kbps/128 kbps */256 kbps */512 kbps */1024 kbps */1536 kbps */2048 kbps */3072 kbps */4096 kbps *

Default setting: 512 kbps *

Note:

The MPEG-4 bit rate is synchronized with "Total bit rate" (☞ page 24). For this reason, the bit rate may be lower than the value when the setting value with an asterisk (*) on the right is selected.

[Image capture size]

Select "VGA (640 x 480)" or "QVGA (320 x 240)" for the image capture size of MPEG-4 images.

Default setting: VGA (640 x 480)

[Image quality]

Select image quality of MPEG-4 images from the following.

Fine/Normal/Low

Default setting: Normal

[Refresh interval (MPEG-4)]

Select an interval (I-frame interval; 1 - 5 seconds) to refresh the displayed MPEG-4 images.

If using under the network environment with frequent error occurrences, shorten the refresh interval for MPEG-4 to diminish image distortions. However, the refresh interval (MPEG-4) may be longer than the set value when displaying JPEG images.

Default setting: 3 sec

[To individual setup] button

Moves to the individual setup page. (☞ page 27)

■ **[MPEG-4 setup (CH individual)]**

[Transmission type]

Select a MPEG-4 transmission type from the following.

Unicast port (AUTO): Up to 8 users can access a single camera concurrently. "Unicast port1 (Image)" and "Unicast port2 (Audio)" will automatically be selected when transmitting images and audio from the unit.

When it is unnecessary to fix the port number for MPEG-4 image transmission such as when using in a particular LAN environment, it is recommended to select "Unicast port (AUTO)".

Unicast port (MANUAL): Up to 8 users can access a single camera concurrently. It is necessary to select "Unicast port1 (Image)" and "Unicast port2 (Audio)" manually to transmit images and audio from the unit. It is possible to fix the port number of the router used for MPEG-4 image transmission via the Internet by setting "Unicast port (MANUAL)". Refer to the operating instructions of the router in use.

Multicast: No concurrent access limitation for a unit. Refer to page 4 for further information about the maximum concurrent access number.

Default setting: Unicast port (AUTO)

Important:

When "Multicast" is selected, set the value of "Total bit rate" greater than the total value of "Max bit rate (per 1 client)" of all the channels.

[Max number of MPEG-4 clients]

Select the number of users to transmit MPEG-4 images at a time. Up to 8 users are available.

- * MPEG-4 images are not transmitted from each channel to more users than the maximum number.

Available value: 1 - 8

Default setting: 4

Important:

- Depending on the PC in use for monitoring, the multicast port number may be already in use. In this case, it may be impossible to monitor images. Change the multicast port number.
 - When transmitting MPEG-4 image via a network, the transmitted image sometimes may not be displayed. In this case, refer to the network administrator.
 - When two or more network interface cards are installed on the PC in use, the network interface card(s) not used for receiving images should be invalidated when displaying images using the multicast port.
-

[Unicast port1 (Image)]

Enter the unicast port number (used to transmit images from the camera).

Available value: 1024 - 50000 (Only even numbers are available.)

Default setting:

CH1: 32004

CH2: 32006

CH3: 32008

CH4: 32010

[Unicast port2 (Audio)]

Enter the unicast port number (used to transmit audio from the unit).

Available value: 1024 - 50000 (Only even numbers are available.)

Default setting: 33004

[Multicast address]

Enter the multicast IP address.

Images and audio will be transmitted to the designated IP address.

Available value: 224.0.0.0 - 239.255.255.255

Default setting: 239.192.0.20

[Multicast port]

Enter the multicast port number (used to transmit MPEG-4 images from the unit).

Available value: 1024 - 50000 (Only even numbers are available.)

Default setting:

CH1: 37004

CH2: 37006

CH3: 37008

CH4: 37010

[Multicast TTL]

Enter the multicast TTL value.

Available value: 1 - 254

Default setting: 16

■ Calculation of refresh interval (JPEG)

It is possible to calculate an interval to refresh the displayed JPEG image that can be transmitted to the maximum number of users accessing.

Calculated values are approximate. Refresh interval changes depending on the settings or the network status.

[Number of JPEG clients when connecting with maximum number of MPEG-4 clients]

The number of JPEG clients of each channel that can connect when the number of accessing MPEG-4 clients is maximum is displayed.

[Number of JPEG monitoring clients]

Select the number of users of each channel to monitor JPEG images on the browser.

[Refresh interval of JPEG monitoring clients]

The set value for refresh interval when monitoring JPEG images on the browser is displayed.

[Number of JPEG receiving devices]

Select the number of connected devices of each channel to receive JPEG images.

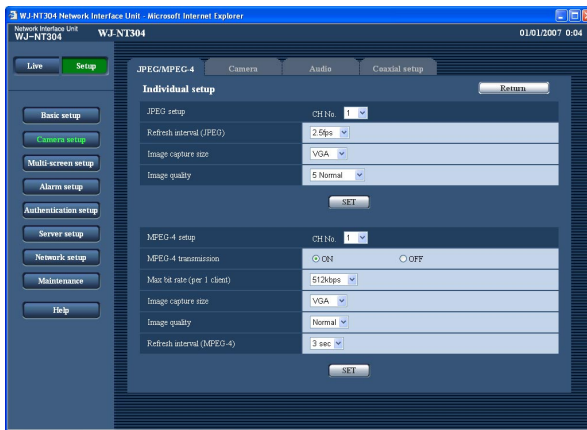
[Refresh interval of JPEG receiving devices]

The set value for refresh interval that can be secured when transmitting JPEG images to each connected device.

About the individual setup menu

It is possible to configure the settings for JPEG and MPEG-4 images of each channel individually. When configuring the settings, consider the network load carefully.

After configuring the settings in the individual setup menu and returning to the [JPEG/MPEG-4] menu, changed items are marked with "**".



[Return]

Returns to the [JPEG/MPEG-4] menu, (page 24)

[CH No.]

Select a channel to configure the setting.

* Refer to page 24 to 26 for setting items.

Note:

When setting "Refresh interval (JPEG)", note the following.

- When "OFF" is selected for "MPEG-4 transmission" on the setup menu, the total refresh interval of all the selected channels shall be 30 fps or less. (When "QVGA" is selected for "Image capture size", divide the value by four.) (Example: When the set values are CH1: VGA, 10 fps, CH2: VGA, 5 fps, CH3: QVGA, 30fps, CH4: QVGA, 30fps: $10 \text{ (CH1)} + 5 \text{ (CH2)} + 30/4 \text{ (CH3)} + 30/4 \text{ (CH4)} = 30 \text{ fps (Total)}$)
- When "ON" is selected for "MPEG-4 transmission" in one or more channels, the total refresh interval of all the selected channels shall be 15 fps or less. (When "QVGA" is selected for "Image capture size", divide the value by four.)

If the set values exceed these settings, the refresh interval of each channel may be lower.

The refresh interval may also be lower depending on the set value of "Image quality", the image contents, or the network status.

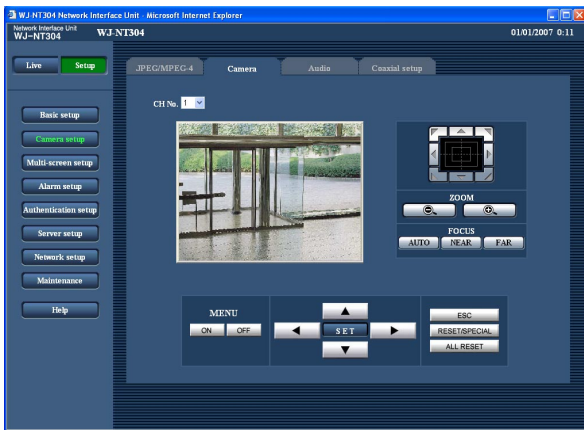
When using Windows® 2000, the greater the set value of "Image quality" is, the lower the refresh interval may be.

When the setting of each channel is changed individually, it is impossible to calculate an interval to refresh the displayed JPEG image.

Configure the settings relating to camera [Camera]

Click the [Camera] tab on the "Camera setup" page. (page 24)

The following are descriptions of how to display the setup menu and configure the settings relating to camera operation using the operation panel. Refer to the provided operating instructions for further information about emergency recording.



[CH No.]

Select a channel to configure the setting.

ZOOM buttons, FOCUS buttons, Control pad/buttons

Select a channel to configure the setting relating to the camera operation.

Refer to pages 5 and 6 for further information.

About the operation panel

Use the following buttons on the operation panel to operate the "Camera setup" page using a PC.



ON [ON] button: Click this button to display the top page of the "Camera setup" page.

OFF [OFF] button: Click this button to close the "Camera setup" page.

SET [SET] button: Click this button to move to the submenu.

Left [Left] button/ **Right** [Right] button: Click these buttons to select the parameters.

Down [Down] button/ **Up** [Up] button: Click these buttons to move the cursor.

ESC [ESC] button: Click this button to return to the previous page.

RESET/SPECIAL [RESET/SPECIAL] button: Display the SETUP MENU of camera, move the cursor onto SPECIAL, and click this button to move to the SPECIAL SETUP menu.

Move the cursor onto REFRESH on the SPECIAL SETUP menu, and click this button to refresh the camera position.

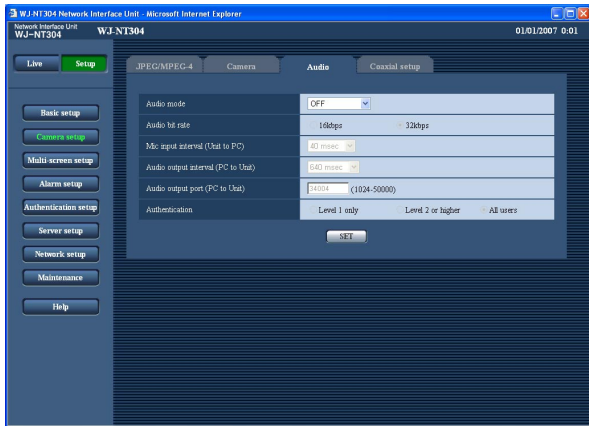
For further information, refer to the operating instructions of the camera.

ALL RESET [ALL RESET] button: Click this button after moving the cursor onto CAMERA RESET on the SPECIAL SETUP menu to reset to the default setting. Refer to the operating instructions of each camera for further information about the settings to be reset.

Configure the settings relating to audio [Audio]

Click the [Audio] tab on the "Camera setup" page. (☞ page 24)

The following are descriptions for when the settings relating to audio from CH1 is configured on this page.



[Audio mode]

Select the communication mode used for audio data transmission/reception between the unit and the PC from the following.

OFF: Does not transmit audio from the unit to the PC.

Therefore, the settings and controls relating to audio will be invalidated.

Receiver: The PC receives audio data from the unit.

Audio can be heard with images on the PC. Images and audio will not be synchronized.

Transmission: Audio data from the PC will be transmitted to the unit. Audio can be heard from the speaker connected to the unit.

Interactive: The PC receives audio data from the unit.

Audio can be heard with images on the PC. Audio transmitted from the PC to the unit can also be heard from the speaker connected to the unit (Transceiver type). However, audio data cannot simultaneously be transmitted and received.

Default setting: OFF

Note:

When "Multicast" is selected for "Transmission type" of "MPEG-4 setup" in the "MPEG-4 setup" section of the [JPEG/MPEG-4] tab of the "Camera setup" page (☞ page 24), it is impossible to carry out the "Audio output" operation while monitoring MPEG-4 image. To carry out the "Audio output" operation, click the [JPEG] button.

[Audio bit rate]

Select "16 kbps" or "32 kbps" for the audio bit rate used to transmit/receive audio data.

Default setting: 32 kbps

[Mic input interval (Unit to PC)]

Select an interval for audio reception from the following. 20 msec/40 msec/80 msec/160 msec

Default setting: 40 msec

Note:

When a shorter interval is selected, the delay time will be shorter. When a longer interval is selected, audio interruption may be diminished even though the delay time will be longer.

Select the interval according to the network environment.

[Audio output interval (PC to Unit)]

Select an interval for audio transmission from the following. 160 msec/320 msec/640 msec/1280 msec

Default setting: 640 msec

Notes:

- When a shorter interval is selected, the delay time will be shorter. When a longer interval is selected, audio interruption may be diminished even though the delay time will be longer. Select the interval according to the network environment.
- Audio may temporarily be interrupted or noise may be heard when panning, tilting or zooming the camera, or when multiple users are accessing concurrently. It may be possible to diminish the interruption or noise by setting a longer interval for "Audio output interval (PC to Unit)".

[Audio output port (PC to Unit)]

Enter the transmission port number (the port number on the unit used to receive audio data transmitted from the PC).

Available value: 1024 - 50000 (Only even numbers are available.)

Default setting: 34004

Note:

The transmission port number entered for "Audio output port (PC to Unit)" will be used only when transmitting MPEG-4 images. When "OFF" is selected for "MPEG-4 transmission" (☞ page 25), it is not necessary to enter the transmission port number.

[Authentication]

Select an access level for audio transmission/reception from the following. Refer to page 37 for further information about the access level.

Level 1 only/Level 2 or higher/All users

Default setting: All users

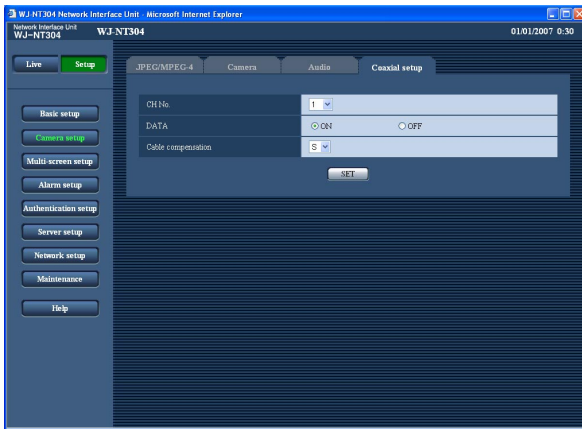
Note:

- Images and audio will not be synchronized. Therefore, images and audio may not always match.
- Audio may be interrupted depending on the network environment.

Configure the settings relating to coaxial communication [Coaxial setup]

Click the [Coaxial setup] tab on the "Camera setup" page. (☞ page 24)

The settings relating to camera control and cable compensation with coaxial communication can be configured on this page.



[CH No.]

Select a channel to configure the setting, and configure the following items.

[DATA]

Select "ON" or "OFF" to determine whether or not to control cameras with the coaxial communication.

ON: Controls cameras with coaxial communication.

OFF: Not controls cameras with coaxial communication.

Default setting: ON

[Cable compensation]

Select the desired settings for cable compensation (the function to compensate the attenuation of video input signals) according to the cable length.

Perform the settings for the cable compensation properly according to the cable length.

Otherwise camera pictures may not be displayed/recorded correctly.

- * The following cable length settings are references when using RG-59/U, BELDEN 9259 (for NTSC models), 5C-2V (for PAL models) or equivalent cables.

S: Less than 400 m {1 300 ft.}

M: 400 m {1 300 ft.} to 700 m {2 300 ft.}

L: 700 m {2 300 ft.} to 1 200 m {4 000 ft.}

Default setting: S

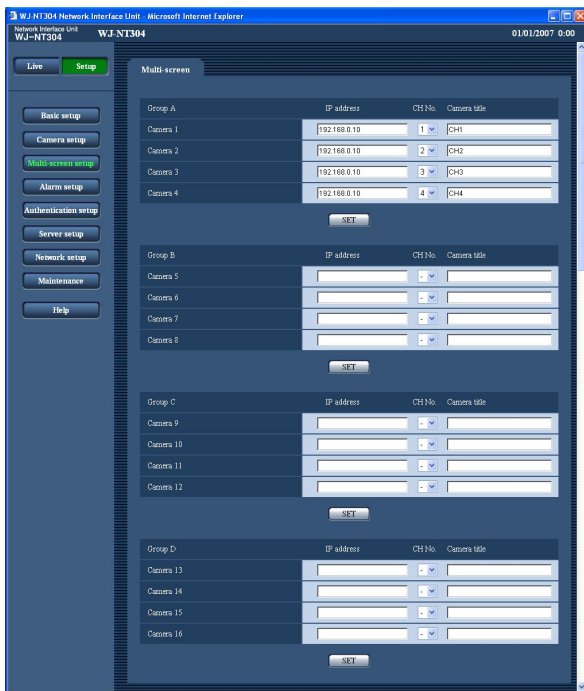
Configures the multi-screen settings [Multi-screen setup]

The cameras to be used for the multi-screen display can be registered on this page.

Refer to page 15 for descriptions of how to display images on a multi-screen.

The following cameras are available for the multi-screen display. (As of December, 2006)

Cameras connected to WJ-NT304, cameras connected to the network, WV-NP240 series, WV-NP1000 series, WV-NW470S series, WV-NP472, WV-NS320 series, WV-NS202, WV-NF284



[IP address]

Enter the IP address or the host name of the camera to be used for the multi-screen. 4 cameras can be registered as a group and up to 4 groups (16 cameras) can be registered.

When the HTTP port number for the camera had been changed, enter as follows: (Example:
192.168.0.10: 8080)

Number of characters that can be entered: 1 - 128 characters

Default setting: 192.168.0.10

Notes:

- When using the host name, it is necessary to configure the DNS settings of the PC in use.
- When displaying images from cameras connected to this unit on a multi-screen, set the IP address of the unit.

[CH No.]

Select a desired channel number (CH1 to 4) when displaying images on a multi-screen using a network device with channel information such as this unit. Select "-" when displaying images on a multi-screen using a device without channel information.

Available value: 1 - 4

Default setting:

- Camera 1: CH1
- Camera 2: CH2
- Camera 3: CH3
- Camera 4: CH4

[Camera title]

Enter the title of the camera. The entered camera title will be displayed on a multi-screen.

Number of characters that can be entered: 0 - 20 characters

Default setting:

- Camera 1: CH1
- Camera 2: CH2
- Camera 3: CH3
- Camera 4: CH4

Configure the alarm settings [Alarm setup]

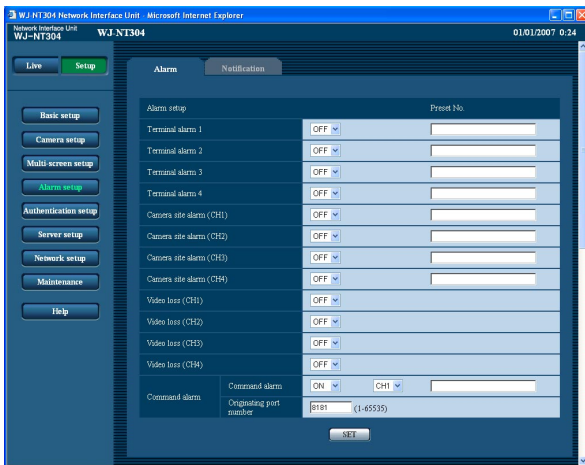
The settings relating to alarm occurrences such as settings for the alarm action at an alarm occurrence, the alarm occurrence notification, and the VMD area settings can be configured on the "Alarm setup" page.

The "Alarm setup" page has 3 tabs of the [Alarm] tab, and the [Notification] tab.

Configure the settings relating to the alarm action [Alarm]

Click the [Alarm] tab on the "Alarm setup" page.

The settings relating to the alarm action can be configured on this page. Refer to pages 33 and 34 for further information about the settings relating to the alarm image and the alarm out connector.



■ Alarm setup

[Terminal alarm 1 to 4]

Select "ON" or "OFF" to determine whether or not to receive the terminal alarm 1 to 4.

ON: Receives alarms.

OFF: Does not receive.

Default setting: OFF

When "ON" is selected, the camera connected to the video input connector of CH1 to 4 will move to the selected preset position when Terminal alarm 1 to 4 is detected.

Available value: Blank, 1 - 256

Default setting: Blank

[Camera site alarm (CH1 to 4)]

Select "ON" or "OFF" to determine whether or not to receive the camera site alarm from the camera connected to the video input connector of CH1 to 4.

ON: Receives alarms.

OFF: Does not receive.

Default setting: OFF

When "ON" is selected, the camera connected to the video input connector of CH1 to 4 will move to the selected preset position when Camera site alarm (CH1 to 4) is detected.

Available value: Blank, 1 - 256

Default setting: Blank

[Video loss (CH1 to 4)]

Select "ON" or "OFF" to determine whether or not to detect the video loss from the camera connected to the video input connector of CH1 to 4.

ON: Detects video loss.

OFF: Does not detect.

[Command alarm]

Select "ON" or "OFF" to determine whether or not to receive the command alarm. When "ON" is selected, perform the following settings.

ON: Receives alarms.

OFF: Does not receive.

Default setting: OFF

The command alarm is the function that receives Panasonic alarm protocol from other Panasonic's network devices. Using this function, alarm actions will be performed between multiple network devices. When "ON" is selected, alarm image FTP transmission and alarm output are activated for the selected channel. (When "-" is selected, alarm image FTP transmission and alarm output are unavailable.)

Available value: -, CH1 to 4

Default setting: CH1

When "ON" is selected, the camera connected to the video input connector of CH1 will move to the selected preset position when Terminal alarm 1 is detected.

Available value: Blank, 1 - 256

Default setting: Blank

[Originating port number]

Select a port number to be used to receive the command alarm.

Available value: 1 - 65535

Default setting: 8181

Configure the settings relating to the alarm image [Alarm image setup]

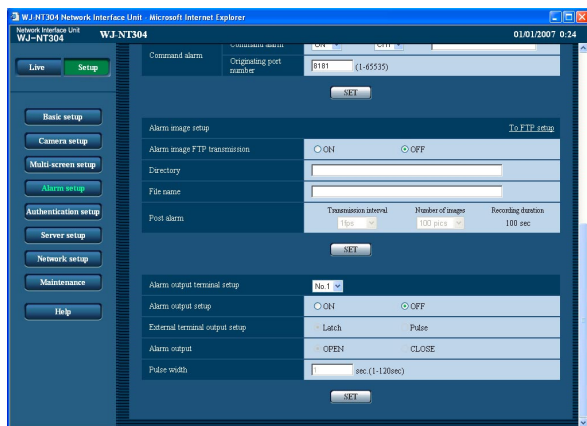
Click the [Alarm] tab on the "Alarm setup" page. (☞ page 32)

The settings relating to the alarm image to be transmitted to the FTP server can be configured on this page. The alarm image will be transmitted to the FTP server. To transmit alarm images to the FTP server, it is necessary to configure the settings in advance. (☞ page 40)

Refer to pages 33 and 34 for further information about the settings relating to the alarm image and the alarm out connector.

Important:

- Depending on the network line speed or the network traffic, images may not be transmitted at the exact designated interval or period.
- Image capture size and image quality of "JPEG setup" on the [JPEG/MPEG-4] tab are applied for the alarm image to be transmitted. (☞ page 25)



■ Alarm image setup

[To FTP setup]

When "To FTP setup" is clicked, the [FTP] tab of the "Server setup" page will be displayed. (☞ page 40)

[Alarm image FTP transmission]

Select "ON" or "OFF" to determine whether or not to transmit the alarm image to the FTP server.

Default setting: OFF

[Directory]

Enter the directory name where the alarm images are to be saved.

For example, enter "/ALARM" to designate the directory "ALARM" under the FTP root directory.

Number of characters that can be entered: 0 - 256 characters

Default setting: Blank

[File name]

Enter the file name used for the alarm image to be transmitted to the FTP server. The file name will be as follows.

File name: ["Entered file name" + "Time and date (year/month/day/hour/minute/second)"] + "Serial number"

Number of characters that can be entered: 1 - 8 characters

Default setting: Blank

[Post alarm]

[Transmission interval]

Select a transmission interval for the alarm image FTP transmission from the following.

0.1 fps/0.2 fps/0.33 fps/0.5 fps/1 fps

Default setting: 1 fps

[Number of images]

Select the number of images to be transmitted from the following.

10 pics/20 pics/ 30 pics/50 pics/100 pics/200 pics/
300 pics/500 pics/1000 pics/2000 pics/3000 pics/
5000 pics

Default setting: 100 pics

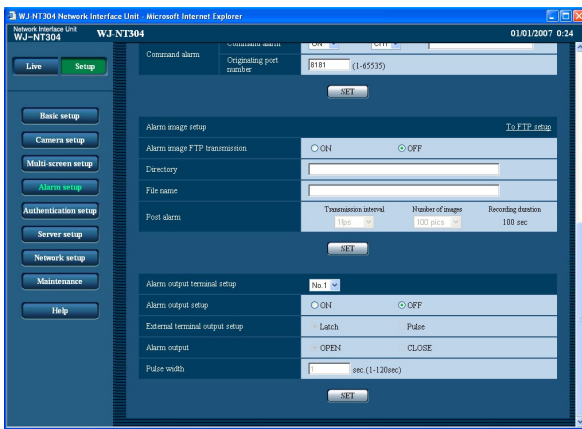
[Recording duration]

Approximate time to be taken to save the set "number of images" with the set "transmission interval" will be displayed.

Configure the settings relating to the alarm out connector [Alarm output setup]

Click the [Alarm] tab on the "Alarm setup" page. (☞ page 32)

The settings relating to the alarm out connector can be configured on this page. Alarm Output terminals 1 to 4 are associated with each alarm input of CH1 to 4. Refer to pages 32 and 33 for further information about the settings relating to the alarm action and the alarm image.



■ Alarm output terminal setup

Select a desired alarm output terminal number from the pull-down menu, and configure the following items.

[Alarm output setup]

Select "ON" or "OFF" to determine whether or not to output the alarm signals to the alarm out connector when an alarm is detected.

Default setting: OFF

[External terminal output setup]

Select "Latch" or "Pulse" for the alarm output terminal at an alarm occurrence.

Latch: When an alarm is detected, alarm output connector will be in the state selected for "Alarm output" until the [Alarm reset] button is clicked.

Pulse: When an alarm is detected, the alarm output terminal will be in the state to the "Alarm output" setting for the period set for "Pulse width".

Default setting: Latch

[Alarm output]

Select "OPEN" or "CLOSE" to determine whether to open or close the alarm output connector when output the alarm signals.

OPEN: The alarm out connector will open when output the alarm signals. (Normally close)

CLOSE: The alarm out connector will close when output the alarm signals. (Normally open)

Default setting: CLOSE

Note:

When "OPEN" is selected, the alarm signal will be output for around 90 seconds when the power of the unit is turned on.

[Pulse width]

When "Pulse" is selected for "Alarm output", select an alarm output terminal duration from the following.

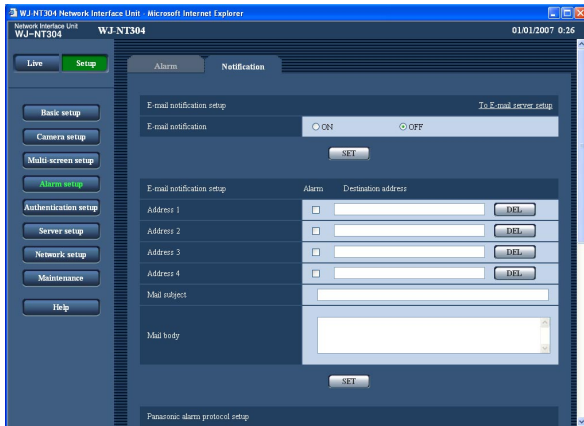
Available value: 1 - 120 sec

Default setting: 1 sec

Configure the settings relating to the mail notification [Notification]

Click the [Notification] tab on the "Alarm setup" page. (☞ page 32)

The settings relating to the alarm mail can be configured on this page. To notify of an alarm occurrence by e-mail, it is necessary to configure the settings of the mail server. (☞ page 39)



[Mail body]

Enter the mail body.

Number of characters that can be entered: 0 - 200 characters

Note:

By entering "%p%", it is possible to transmit alarm type and channel information.

■ E-mail notification setup

[To E-mail server setup]

When "To E-mail server setup" is clicked, the [Mail] tab of the "Server setup" page will be displayed. (☞ page 39)

[E-mail notification]

Select "ON" or "OFF" to determine whether or not to notify of an alarm occurrence by e-mail at an alarm occurrence.

Default setting: OFF

■ E-mail notification setup

[Address 1] to [Address 4]

Enter the destination mail address. Up to 4 destination addresses can be registered.

To notify by e-mail when an alarm occurred, check the "Alarm" checkbox respective to the desired address.

To delete the registered address, click the [DEL] button respective to the desired address.

Number of characters that can be entered: 3 - 128 characters

[Mail subject]

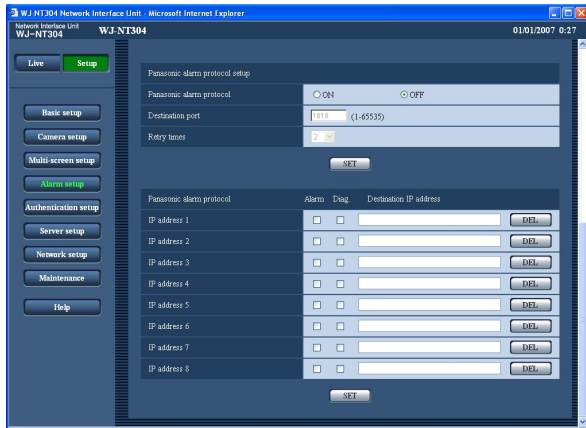
Enter the mail subject.

Number of characters that can be entered: 0 - 50 characters

Configure the settings relating to Panasonic alarm protocol [Panasonic alarm protocol]

Click the [Notification] tab on the "Alarm setup" page. (☞ page 32)

The settings relating to Panasonic alarm protocol can be configured on this page.



■ Panasonic alarm protocol setup

[Panasonic alarm protocol]

Select "ON" or "OFF" to determine whether or not to notify of an alarm occurrence by Panasonic alarm protocol when an alarm is detected.

Default setting: OFF

Note:

When "ON" is selected, the alarm occurrence will be notified to the registered destination IP addresses in order (to IP address 1 first, to IP address 8 last).

[Destination port]

Select a destination port of the Panasonic alarm protocol from the following.

Available value: 1 - 65535

Default setting: 1818

[Retry times]

Select a retry time of Panasonic alarm protocol.

Available value: 1 to 30

Default setting: 2

■ Panasonic alarm protocol

[IP address 1] to [IP address 8]

Enter the destination IP address of the Panasonic alarm protocol from the following. Host name is unavailable for the IP address. Up to 8 destination addresses can be registered.

To provide notification at an alarm occurrence to the desired IP address using Panasonic alarm protocol, check the "Alarm" checkbox respective to the desired IP address.

To provide notification using Panasonic alarm protocol when any of the following has occurred, check the "Diag." checkbox respective to the desired address.

- When notification of the remaining space of the SD memory card has been provided (☞ page 21)
- When the SD memory card has become full
- When mounting of the SD memory card has failed

To delete the registered address, click the [DEL] button respective to the desired address.

Number of characters that can be entered: 1 - 128 characters

Important:

Confirm that the destination IP addresses are registered correctly. When a registered IP address does not exist, notification may be delayed.

Configure the settings relating to the authentication [Authentication setup]

The settings relating to the authentication such as users and PCs restrictions for accessing the unit can be configured on this page.

The "Authentication setup" page has 2 tabs of the [User] tab and the [Host] tab.

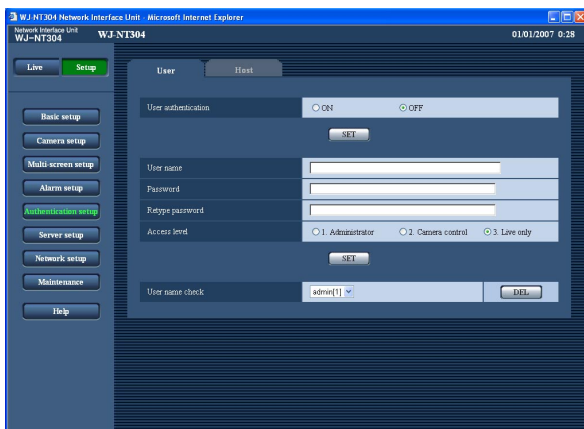
Configure the settings relating to the user authentication [User]

Click the [User] tab on the "Authentication setup" page.

The settings relating to the user authentication can be configured on this page. Up to 16 users can be registered.

Note:

When user authentication (authentication error) has failed to pass 8 times (6 times when clicking the [Go] button of the browser) within 5 minutes using the same IP address (PC), access to the camera will be denied for a while.



[User authentication]

Select ON or OFF to determine whether or not to authenticate the user.

Default setting: OFF

[User name]

Enter a user name.

Number of characters that can be entered: 1 - 32 characters

Default setting: (blank)

[Password] [Retype password]

Enter the password.

Number of characters that can be entered: 4 - 32 characters

Default setting: (blank)

[Access level]

Select the access level of the host from the following.

- 1. Administrator:** Allowed all available operations of the unit.
- 2. Camera control:** Allowed to display images from the unit and to control the unit. The unit setting configuration is unavailable.
- 3. Live only:** Only displaying live images is available. The unit setting configuration and unit control are unavailable.

Default setting: 3. Live only

Note:

By clicking [✓] of "User name check", the registered user can be selected and the selected user's information can be checked.

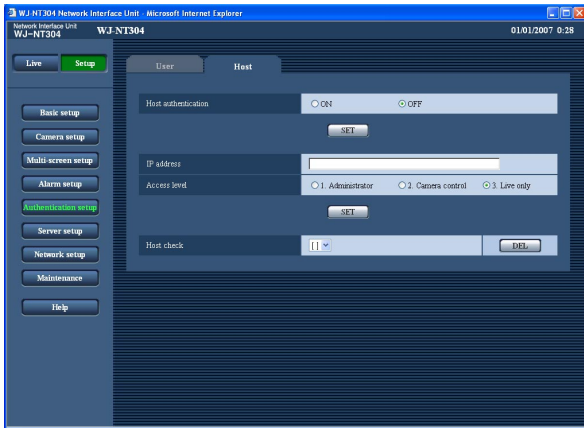
The registered user will be displayed with the access level. (Example: admin [1])

To delete the registered user, click the [DEL] button after selecting the user to be deleted.

Configure the settings relating to the host authentication [Host]

Click the [Host] tab on the "Authentication setup" page. (page 37)

The settings to restrict PCs (IP address) to access the unit can be configured on this page.



[Host authentication]

Select ON or OFF to determine whether or not to authenticate the host.

Default setting: OFF

Important:

Before selecting "ON" for "Host authentication", it is necessary to register IP addresses of the PCs to be allowed to access the unit and determine their access levels.

[IP address]

Enter the IP address of the PC to be allowed to access the unit.

Host name is unavailable for the IP address.

Default setting: Blank

Notes:

- When "IP address/subnet mask" is entered, it is possible to restrict PCs in each subnet.
For example, when "192.168.0.1/1/24" is entered and "2. Camera control" is selected for the access level, the PCs whose IP address is between "192.168.0.0" - "192.168.0.255" can access the camera with the access level "2. Camera control".
- When the IP address already in use is entered and the [REG] button is clicked, the respective host information will be overwritten.

[Access level]

Select the access level of the host from the following.

1. Administrator/2. Camera control/3. Live only

Refer to page 37 for further information about the access level.

Default setting: 3. Live only

Note:

By clicking [√] of "Host check", the registered host can be selected and the selected host's IP address can be checked.

The registered IP address will be displayed with the access level. (Example: 192.168.0.21 [1])

To delete the registered host, click the [DEL] button after selecting the IP address to be deleted.

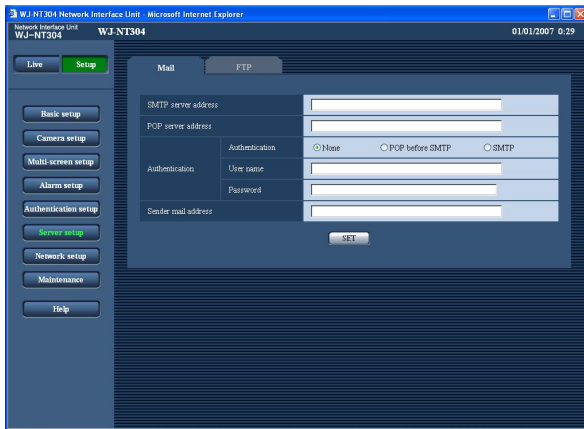
Configure the settings of the servers [Server setup]

The settings relating to the mail server and the FTP server can be configured on this page. The "Server setup" page has 2 tabs of the [Mail] tab and the [FTP] tab.

Configure the settings relating to the mail server [Mail]

Click the [Mail] tab on the "Server setup" page.

The settings relating to the mail server used to send the alarm mail can be configured on this page.



[SMTP server address]*

Enter the IP address or the host name of the SMTP server used to send e-mails.

Number of characters that can be entered: 1 - 128 characters

Default setting: Blank

[POP server address]*

When "POP before SMTP" is selected for "Authentication", enter the IP address or the host name of the POP server.

Number of characters that can be entered: 1 - 128 characters

Default setting: Blank

Important:

When entering the host name for "NTP server address", it is necessary to configure the DNS settings on the [Network] tab of the "Network setup" page. (page 42)

[Authentication]

Select the authentication method to send e-mails from the following.

None: It is not necessary to clear any authentication to send e-mails.

POP before SMTP: It is necessary to clear the POP server authentication first to use the SMTP server to send e-mails.

SMTP: It is necessary to clear the SMTP server authentication to send e-mails.

Default setting: None

Note:

When you don't know the authentication method to send e-mails, refer to the network administrator.

[User name]

Enter the user name to access the server.

Number of characters that can be entered: 1 - 32 characters

Default setting: Blank

[Password]

Enter the password to access the server.

Number of characters that can be entered: 0 - 32 characters

Default setting: Blank

[Sender mail address]

Enter the mail address of a sender.

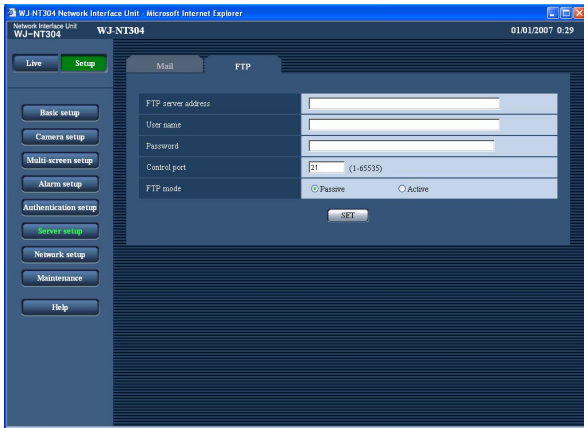
Entered mail address will be displayed in the "From" (sender) line of the sent mails.

Number of characters that can be entered: 3 - 128 characters

Configure the settings relating to the FTP server [FTP]

Click the [FTP] tab on the "Server setup" page. (☞ page 39)

The settings relating to the FTP server used to transmit the alarm images can be configured on this page.



[FTP mode]

Select "Passive" or "Active" for the FTP mode. Normally, select "Passive". When failed to establish the connection, select "Active".

Default setting: Passive

[FTP server address]

Enter the IP address or the host name of the FTP server.

Number of characters that can be entered: 1 - 128 characters

Important:

When entering the host name for "FTP server address", it is necessary to configure the DNS settings on the [Network] tab of the "Network setup" page. (☞ page 42)

[User name]

Enter the user name (login name) to access the FTP server.

Number of characters that can be entered: 1 - 32 characters

Default setting: Blank

[Password]

Enter the password to access the FTP server.

Number of characters that can be entered: 0 - 32 characters

Default setting: Blank

[Control port]

Enter a control port number to be used for the FTP server.

Available port number: 1 - 65535

Default setting: 21

Configuring the network settings [Network setup]

The network settings and the settings relating to DDNS (Dynamic DNS) and SNMP (Simple Network management Protocol) can be configured on this page.

The "Network setup" page has 4 tabs of the [Network] tab, the [DDNS] tab, the [SNMP] tab and the [FTP] tab.

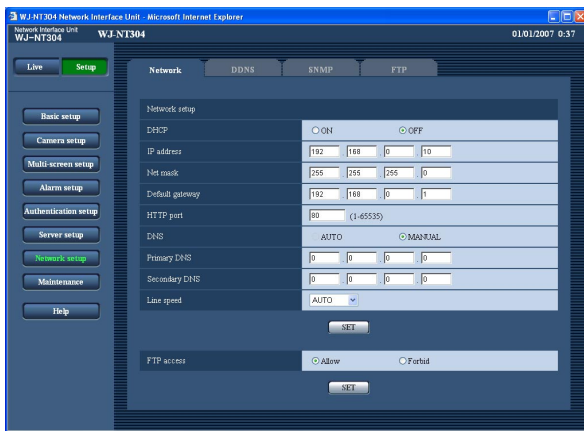
Configure the network settings [Network]

Click the [Network] tab on the "Network setup" page.

The following information is required to configure the network settings.

Contact the network administrator or your Internet service provider.

- IP address
- Net mask
- Default gateway (when using the gateway server/router)
- HTTP port Number
- Primary DNS, Secondary DNS (when using DNS)



■ Network setup

[DHCP]

Select "ON" or "OFF" to determine whether or not to use the DHCP function.

Configure the DHCP server not to assign the same IP addresses used for the other network cameras and PCs whose IP address is unique. Refer to the network administrator for the settings of the server.

Default setting: OFF

[IP address]

When not using the DHCP function, enter the IP address of the unit. Do not enter the IP address already in use (for the PCs and the other network cameras).

Default setting: 192.168.0.10

<Unavailable IP addresses>

0. . . .
* . . . 0
255. * . .
* . . . 255
127.0.0.1

Class D address (224.0.0.0 - 239.255.255.255)

Class E address (240.0.0.0 - 255.255.255.255)

* These IP addresses are unavailable even when using the DHCP function. Refer to the network administrator for the settings of the DHCP server.

[Net mask]

When not using the DHCP function, enter the net mask of the unit.

Default setting: 255.255.255.0

[Default gateway]

When not using the DHCP function, enter the default gateway of the unit.

Default setting: 192.168.0.1

<Unavailable IP addresses for the default gateway>

0.*.*

..*0

255.*.*

..*255

127.0.0.1

Class D address (224.0.0.0 - 239.255.255.255)

Class E address (240.0.0.0 - 255.255.255.255)

- * These IP addresses for the default gateway are unavailable even when using the DHCP function. Refer to the network administrator for the settings of the DHCP server.

[HTTP port]

Assign the port numbers independently.

Available port number: 1 - 65535

Default setting: 80

[DNS]

Select "AUTO" or "MANUAL" to determine whether or not to use the DNS.

When "MANUAL" is selected, it is necessary to configure the settings for the DNS.

When using the DHCP function, it is possible to obtain the DNS address automatically by selecting "AUTO".

Refer to the network administrator for further information about the settings.

Default setting: MANUAL

[Primary DNS], [Secondary DNS]

When "MANUAL" is selected for "DNS", enter the IP address of the DNS. Refer to the network administrator about the IP address of the DNS.

[Line speed]

Select the line speed for data transmission from the followings. It is recommended to use the default setting "AUTO".

AUTO: Line speed will be applied automatically.

100M-FULL: 100 Mbps full-duplex

100M-HALF: 100 Mbps half-duplex

10M-FULL: 10 Mbps full-duplex

10M-HALF: 10 Mbps half-duplex

Default setting: AUTO

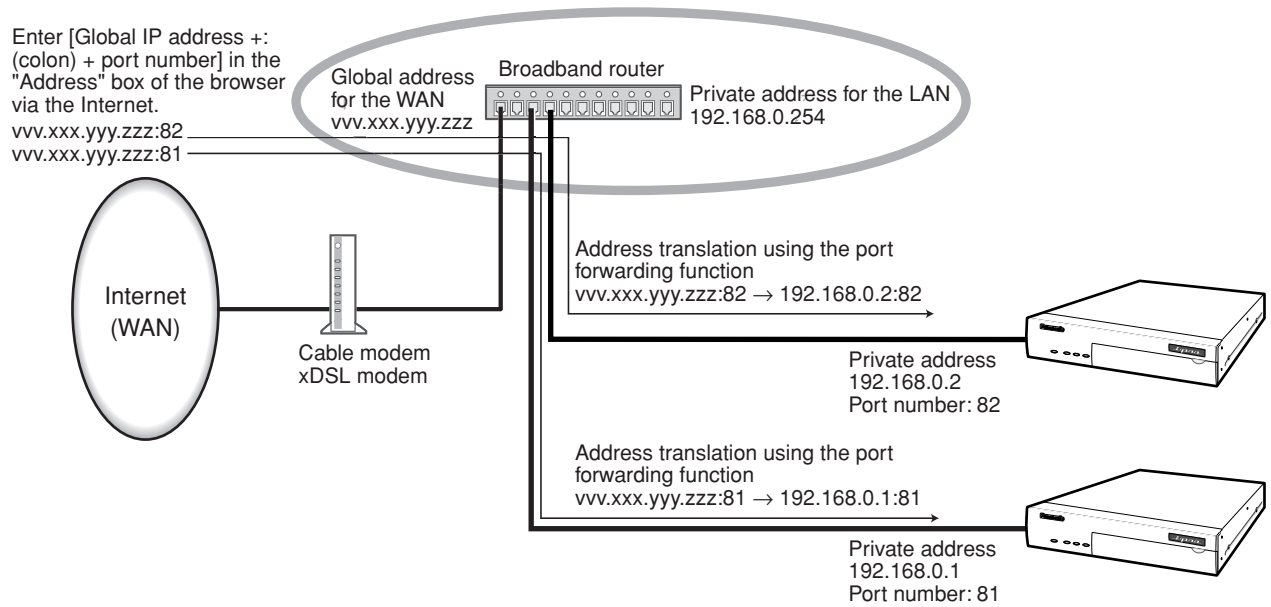
[FTP access]

Select "Allow" or "Forbid" to determine whether to allow or forbid the FTP access.

Default setting: Forbid

Notes:

- The port forwarding function changes a global IP address to a private IP address, and "Static IP masquerade" and "Network Address Translation (NAT)" have this function. This function is to be set in a router.
- To access the unit via the Internet by connecting the unit to a broadband router, it is necessary to assign a respective port number for each device and address translation by using the port forwarding function. For further information, refer to the operating instructions of the broadband router in use.



Configure the settings relating to DDNS [DDNS]

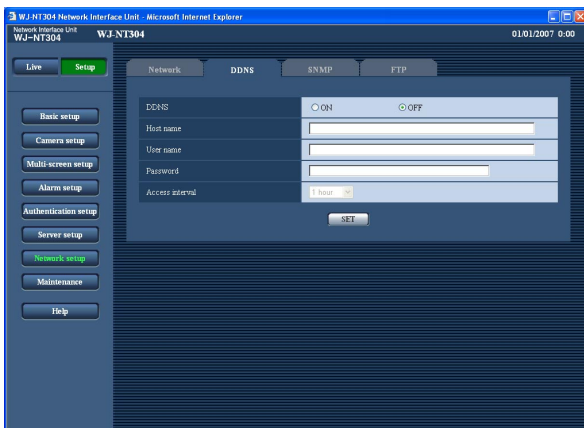
Click the [DDNS] tab on the "Network setup" page. (page 41)

The settings relating to DDNS can be configured on this page.

When accessing the unit via the Internet from the network environment of which the global IP address is obtained using DHCP, the DDNS function is necessary.

When using the DDNS function, it is possible to access with "Host name registered in the DDNS server. nmdns.net". To use the DDNS function, it is necessary to connect to the dedicated DDNS server. Refer to the web site for further information about the DDNS. Refer to the "Readme" file about the web site.

It is necessary to configure the host name, user name and password registered in the DDNS server.



[Access interval]

Select the interval to access the DDNS server to check the IP address and the host name from the following.

1 min/10 min/30 min/1 hour/6 hours/24 hours

Default setting: 1 hour

[DDNS]

Select "ON" or "OFF" to determine whether or not to use the DDNS function.

Default setting: OFF

[Host name]

Enter the host name to be used.

Number of characters that can be entered: 1 - 64 characters

Default setting: Blank

[User name]

Enter the user name (login name) to access the DDNS server.

Number of characters that can be entered: 1 - 32 characters

Default setting: Blank

[Password]

Enter the password to access the DDNS server.

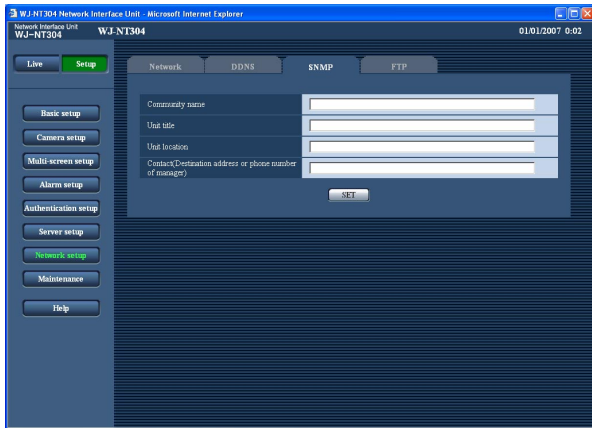
Number of characters that can be entered: 0 - 32 characters

Default setting: Blank

Configure the settings relating to SNMP [SNMP]

Click the [SNMP] tab on the "Network setup" page. (page 41)

The settings relating to SNMP can be configured on this page. It is possible to check the status of the unit by connecting to the SNMP manager. When using the SNMP function, contact the network administrator.



[Contact (Destination address or phone number of manager)]

Enter the mail address or the phone number of the SNMP manager.

Number of characters that can be entered: 0 - 255 characters

Default setting: (blank)

Notes:

- "" is regarded as a blank.
 - It may take around 30 seconds until the setting is applied.
-

[Community name]

Enter the community name to be monitored.

Number of characters that can be entered: 0 - 32 characters

Default setting: (blank)

Important:

When using the SNMP function, it is necessary to enter the community name. When no community name is entered, the SNMP function will not work.

[Unit title]

Enter a unit title to be used to manage the unit with the SNMP function.

Number of characters that can be entered: 0 - 32 characters

Default setting: (blank)

[Unit location]

Enter the name of the location where the unit is installed.

Number of characters that can be entered: 0 - 32 characters

Default setting: (blank)

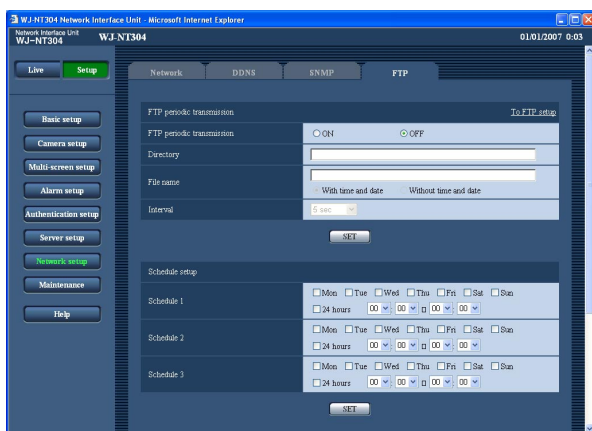
Configure the settings relating to the FTP periodic transmission [FTP periodic transmission]

Click the [FTP] tab on the "Network setup" page. (☞ page 41)

The settings relating to the periodic transmission of images to an FTP server can be configured on this page. To transmit images to an FTP server periodically, it is necessary to configure the settings of the FTP server in advance. (☞ page 40) Refer to page 47 for descriptions of how to configure schedules of image transmission.

Important:

- Depending on the network line speed or the network traffic, images may not be transmitted at the exact designated interval or period.
- When "ON" is selected for both of the alarm image FTP transmission function and the FTP periodic transmission function, the alarm image FTP transmission function will be given priority over the FTP periodic transmission function. For this reason, images may not be transmitted at the exact designated interval or period if alarms occur frequently.
- Image capture size and image quality of "JPEG setup" on the [JPEG/MPEG-4] tab are applied for the alarm image to be transmitted. (☞ page 25)



■ FTP periodic transmission

[To FTP setup]

When "To FTP setup" is clicked, the [FTP] tab of the "Server setup" page will be displayed. (☞ page 40)

[FTP periodic transmission]

Select "ON" or "OFF" to determine whether or not to transmit images using the FTP periodic transmission function.

When "ON" is selected, it is necessary to configure the settings of the FTP server. (☞ page 40)

The images from the selected channel will be transmitted to the FTP server. (☞ page 24)

Default setting: OFF

[Directory]

Enter the directory name where the images are to be saved.

For example, enter "/img" to designate the directory "img" under the FTP root directory.

Number of characters that can be entered: 0 - 256 characters

Default setting: (blank)

[File name]

Enter the file name (name of the image file to be transmitted) and select the naming option from the following.

With time and date: File name will be ["Entered file name" + "CH number" + "Time and date (year/month/day/hour/minute/second)" + "Sequence number (normally "00")"].

Without time and date: File name will be the characters entered for "File name" only. When "Without time and date" is selected, the file will be overwritten each time a file is transmitted newly.

Number of characters that can be entered: 1 - 32 characters

Default setting: (blank)

[Interval]

Select the interval for the FTP periodic transmission from the following.

1 sec/2 sec/3 sec/4 sec/5 sec/6 sec/10 sec/15 sec/20 sec/30 sec/1 min/2 min/3 min/4 min/5 min/6 min/10 min/15 min/20 min/30 min/1 hour/1.5 hours/2 hours/3 hours/4 hours/6 hours/12 hours/24 hours

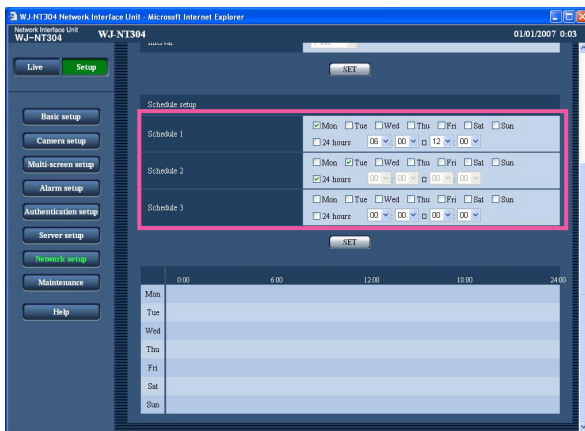
Default setting: 5 sec

Configure the schedule settings of the FTP periodic transmission [Schedule setup]

Click the [FTP] tab on the "Network setup" page. (page 41)

The schedule settings of the FTP periodic transmission can be configured on this page. Refer to page 46 for further information about the settings relating to the FTP periodic transmission.

How to configure the schedule settings



Step 1

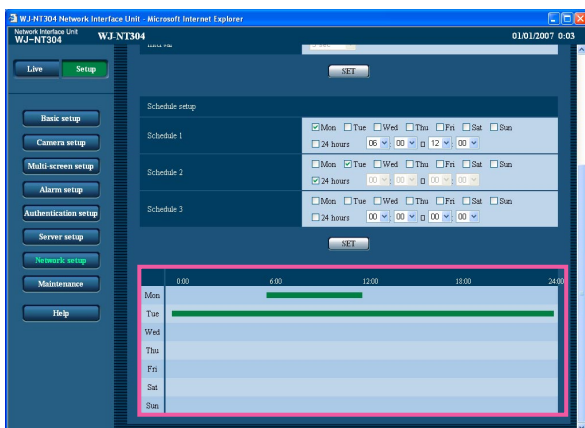
Check the check box of the desired day of the week.
→ The selected day of the week will be validated for the schedule.

Step 2

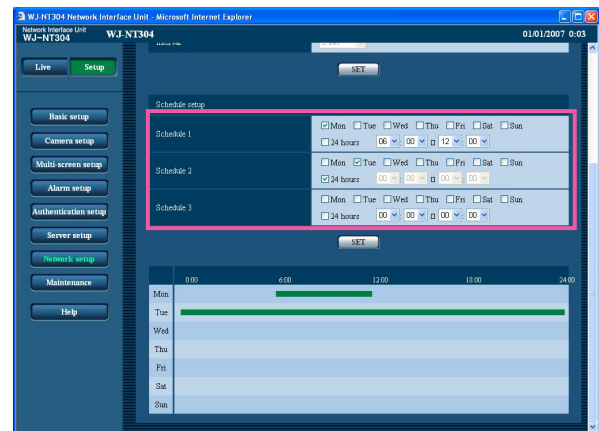
To designate time, click [V] beside the hour and minute and select the desired "hour" and "minute".
When not designating time, check the checkbox of "24 hours".

Step 3

Click the [SET] button after completing the settings.
→ The result will be displayed at the bottom of the window.



How to delete the set schedule

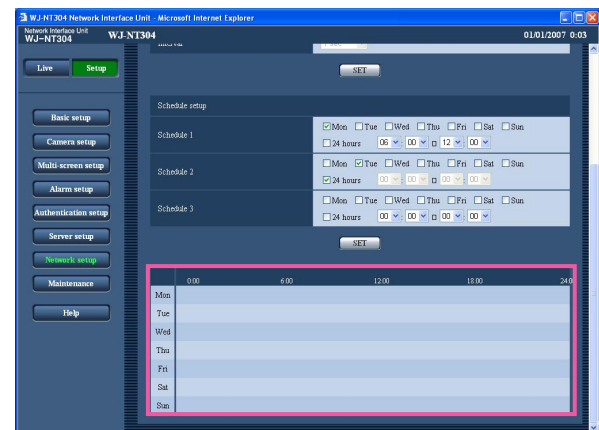


Step 1

Uncheck the check box of the set day of the week.

Step 2

Click the [SET] button after completing the settings.
→ The result will be displayed at the bottom of the window.



Maintenance of the unit [Maintenance]

System log check, firmware upgrade, and initialization of the setup menu can be performed on this page. The "Maintenance" page has 3 tabs of the [System log] tab, the [Upgrade] tab and the [Initialization] tab.

Check the system log [System log]

Click the [System log] tab of the "Maintenance" page.

Up to 320 KB (approx. 4 000 logs) or more system logs can be saved on the SD memory card when the SD memory card is inserted after selecting "Use" for "SD memory card" on the [SD memory card] tab (☞ page 21).

When "Not use" is selected for "About the SD memory card", up to 8 KB (approx. 100 logs) or more system logs can be saved on the built-in memory of the unit.

When the saved system logs have reached the capacity, the newer logs will overwrite the older system logs.

The system logs will be displayed in 100 logs each.

When using the SD memory card, the logs will be saved even when the power of this unit is turned off. When not using the SD memory card, the logs will be deleted when the power of this unit is turned off.

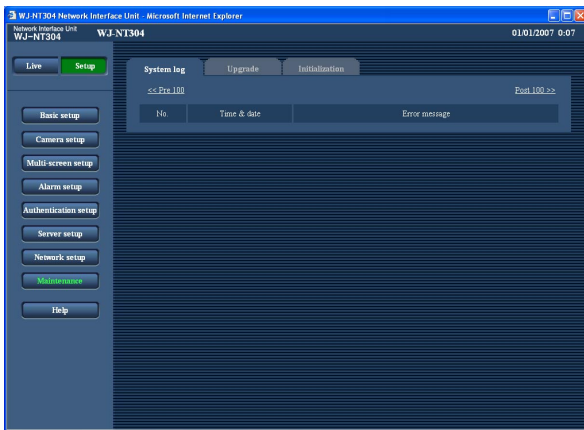
80 KB of system log is periodically overwritten every 5 minutes.

Considering the system log occurs periodically, it is recommended to maintain the SD memory card approx. 5 MB or more.

- When using the SD memory card, saving the system logs will be stopped when the SD memory card becomes full.

In this case, format the SD memory card. Or make the remaining space on the SD memory card, select "Not use" for "SD memory card" on the [SD memory card] tab (☞ page 21), and select "Use" again.

(To notify that the SD memory card becomes full, perform the Panasonic alarm protocol setup. (☞ page 36)



[Time & date]

Time and date at the error occurrence will be displayed.

[Error message]

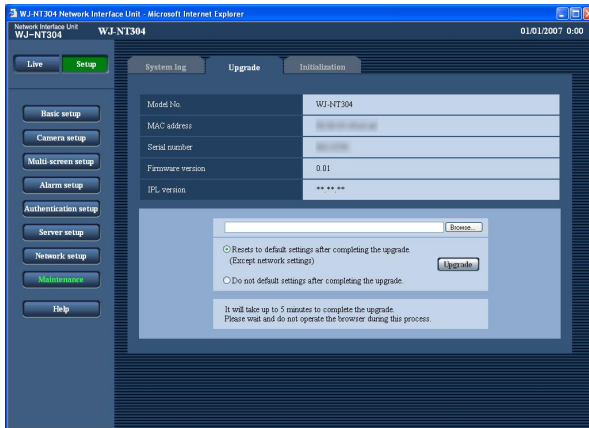
The descriptions about the error will be displayed.

Refer to page 51 for further information about the system logs.

Upgrade the firmware [Upgrade]

Click the [Upgrade] tab of the "Maintenance" page. (☞ page 48)

The current firmware can be checked and upgraded to the latest version on this page. Contact the dealer for further information about the firmware upgrade.



[Model No.], [MAC address], [Serial number],
[Firmware version], [IPL version]

Information of each item will be displayed.

How to upgrade the firmware

Step 1

Contact the dealer and download the latest firmware onto a PC.

Important:

A blank (space) cannot be used for the name of the directory where the downloaded firmware to be saved.

Step 2

Click the [Browse...] button and designate the downloaded firmware.

Step 3

Click the radio button respective to the desired option to determine whether or not to initialize the settings after the firmware upgrade.

Note:

Read the "readme" file provided with the firmware first and determine whether or not to initialize the settings after the firmware upgrade.

Step 4

Click the [Upgrade] button.

→ The confirmation window will be displayed. When "Do not default settings after completing the upgrade." is selected, the confirmation window will not be displayed.

After completing the upgrade, delete temporary internet files. (☞ page 58)

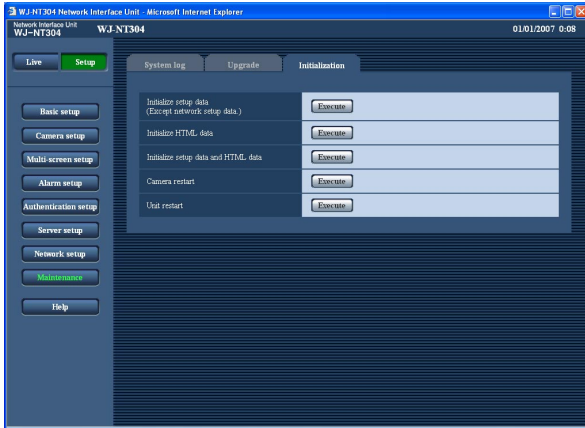
Important:

- Upgrade the firmware using a PC in the same sub-net as of the unit's.
- Follow the instructions from the dealer when upgrading the firmware.
- Use the designated "nt304_XXXXX.img" file for the firmware upgrade. ("XXXXX" indicates the version of the firmware.)
- Do not turn the power of the unit off in the process of upgrade.
- Do not operate the web browser (including adjusting the window size) in the process of upgrade.
- The following network settings will not be initialized when upgrade the firmware after selecting "Reset to default setting after completing the upgrade. (Except network settings)".
ON/OFF for DHCP, IP address, net mask, default gateway, HTTP port, AUTO/MANUAL for DNS, DNS primary and secondary addresses, line speed, time & date

Initialize/restart the unit [Initialization]

Click the [Initialization] tab of the "Maintenance" page. (☞ page 48)

Initialization of the setup data and HTML files of the unit and restarting of the unit can be performed on this page.



[Initialize setup data (Except network setup data)]

Click the [Execute] button to reset the settings to the default. Note that the network settings will not be reset. It is impossible to operate the unit for around 3 minute after the initialization.

[Initialize HTML data]

Click the [Execute] button to reset the HTML files to the default. It is impossible to operate the unit for around 3 minute after the initialization.

[Initialize setup data and HTML data]

Click the [Execute] button to reset the settings of the unit and the HTML files to the default. Note that the network settings will not be reset. It is impossible to operate the unit for around 3 minute after the initialization.

[Camera restart]

Click the [Camera restart] button to restart all the cameras connected to the unit.

After restart, it is impossible to control the cameras for around 1 minute.

[Unit restart]

Click the [Unit restart] button to restart the unit. The unit will be inoperable for around 3 minutes after the restart just as when the power is turned on.

Notes:

- To initialize the network settings (☞ page 41), do the following. Turn off the power of the unit. Turn on the power of the unit by setting the Dip Switch 1 on the front of this unit to ON, and wait around 90 seconds. The unit will start up and all the settings including the network settings will be initialized. When initializing the network settings (except the HTTP port number setting) only, set the Dip Switch 2 to ON. After initialization, be sure to set the Dip Switch 2 to OFF, and turn on the power of the unit again. (Refer to the provided operating instructions for further information about the dip switch.)
 - When the notification function is on, notification will be provided to the registered addresses (mail address or IP address) when the SD memory card has failed to mount after the restart or when the inserted SD memory card is locked. (☞ page 36)
-

About the Displayed System Log

Error indications relating to SMTP

Category	Content	Description
POP3 server error	Authentication error	Entered user name or password may be incorrect. Check if the mail settings are configured correctly.
	Failed to find POP3 server	<ul style="list-style-type: none">• The IP address of the server may be incorrect. Check if the IP address of the server is configured correctly.• The POP3 server may be down. Ask the network administrator.
SMTP server error	SMTP authentication error	Entered user name or password may be incorrect. Check if the mail settings are configured correctly.
	Failed to resolve mail server address from DNS	<ul style="list-style-type: none">• The designated IP address of the DNS server may be incorrect. Check if the DNS settings are configured correctly.• The DNS server may be down. Ask the network administrator.
	Failed to find SMTP server.	<ul style="list-style-type: none">• The IP address of the server may be incorrect. Check if the IP address of the server is configured correctly.• The SMTP server may be down. Ask the network administrator.
Internal error	Other error	An error occurred in the mail function. Check if the mail settings are configured correctly.

Error indications relating to FTP

Category	Content	Description
FTP server error	Failed to resolve FTP server address from DNS	<ul style="list-style-type: none">• The designated IP address of the DNS server may be incorrect. Check if the DNS settings are configured correctly.• The DNS server may be down. Ask the network administrator.
	Failed to find FTP server.	<ul style="list-style-type: none">• The FTP server or DNS server may be down. Ask the network administrator.• The IP address of the server may be incorrect. Check if the IP address of the server is configured correctly.
Connection error	File transfer error	<ul style="list-style-type: none">• The FTP server settings may be incorrect. Check if the FTP settings are configured correctly.• The settings relating to the indicated item may be incorrect. Check if the FTP settings are configured correctly.
	Passive mode error	
	Log out failed	
	Directory change failed	
	User name and password isn't correct.	

Category	Content	Description
Internal error	Other error	An error occurred in the FTP function. Check if the FTP settings are configured correctly.

Error indications relating to DDNS

Category	Content	Description
Connection error	Cannot connect to DDNS server.	<ul style="list-style-type: none"> The designated IP address of the DNS server may be incorrect. Check if the DNS settings are configured correctly. The DNS or DDNS server may be down. Ask the network administrator.
	User name and password isn't correct.	Entered user name or password may be incorrect. Check if the DDNS settings are configured correctly.
	IP address updated failed.	IP address update error occurred in the DDNS server. Ask the network administrator.
Internal error	Other error	An error occurred in the DDNS function. Check if the DDNS settings are configured correctly.

Error indications relating to NTP

Category	Content	Description
Connection error	Cannot connect to NTP server.	<ul style="list-style-type: none"> The IP address of the server may be incorrect. Check if the IP address of the server is configured correctly. The NTP server may be down. Ask the network administrator. The designated IP address of the DNS server may be incorrect. Check if the DNS settings are configured correctly. The DNS server may be down. Ask the network administrator.
Internal error	Other error	An error occurred in the NTP function. Check if the NTP settings are configured correctly.
Time adjustment synchronizing with NTP succeeded.	Succeeded in the update.	Time correction succeeded.

Troubleshooting

Before asking for repairs, check the symptoms on the following table.

Contact your dealer if a problem cannot be solved even after checking and trying the solution or if the problem is not described below.

Symptom	Cause/solution	Reference pages
<p>Cannot access from the browser.</p>	<ul style="list-style-type: none"> Is the LAN cable (category 5) is firmly connected to the network connector on the rear of the unit? 	<p>Operating Instructions</p>
	<ul style="list-style-type: none"> Is the link LED right by the network connector lit? When it is not lit, connection to a LAN may not be established or a network may be not working correctly. Check if the cables have any contact failure or if the wiring is correct or not. 	<p>Operating Instructions</p>
	<ul style="list-style-type: none"> Are the set IP addresses valid? 	<p>41</p>
	<ul style="list-style-type: none"> Are you accessing the wrong IP address? Check the connection as follows: With the Windows command prompt, > ping "IP address of the unit" When the WJ-NT304 replies, the unit is functioning normally. If not, proceed either of the following. <ul style="list-style-type: none"> Restart the unit and change the IP address by using the Panasonic IP setup software within 20 minutes after the restart. Restart the unit by setting the Dip Switch 2 on the front of this unit to ON. The network settings will be initialized and the IP address will return to the default setting "192.168.0.10". After the unit is initialized, access the unit and set the IP address again. 	<p>Operating Instructions</p> <p>50</p>

Symptom	Cause/solution	Reference pages
<p>Cannot access from the browser.</p>	<ul style="list-style-type: none"> • Is the same IP address provided to other devices? Are there contradictions between the address and the network subnet to be accessed? <When the unit and the PC are connected in the same subnet> Are the IP addresses of the unit and the PC set in a common subnet? Or is "Use Proxy Server" for the settings of the browser checked? When accessing the unit in the same subnet, it is recommended to enter the address of the unit in the "Don't Use Proxy For These Addresses" box. <When the unit and the PC are connected in the different subnet> Is the IP address of the default gateway set for the unit correct? 	41
	<ul style="list-style-type: none"> • Is the power of the unit on? Check if the power of the unit is turned on. 	Operating Instructions
<p>No image is displayed.</p>	<ul style="list-style-type: none"> • Is the viewer software installed on a PC? Install the viewer software on a PC. 	Operating Instructions
	<ul style="list-style-type: none"> • Is the version of DirectX 9.0c or later? Check the version of DirectX as follows. (1) Select "Run..." from the start menu of Windows®. (2) Enter "dxdiag" in the displayed dialog box and click the [OK] button. If the version of DirectX is older than 9.0c, upgrade it. 	-
<p>Images are displayed blurry.</p>	<ul style="list-style-type: none"> • Is there dust or dirt on the lens or dome cover? Check if there is dust or dirt on the lens or dome cover. 	-
	<ul style="list-style-type: none"> • Is the focus adjusted correctly? Adjust the focus correctly by clicking the focus buttons. 	6
	<ul style="list-style-type: none"> • When defocusing is caused by the camera position being moved, carry out the position refresh to correct the focus. 	50

Symptom	Cause/solution	Reference pages
The image is not being refreshed.	<ul style="list-style-type: none"> Depending on the version of your browser, there might be difficulties refreshing the picture and operating the unit. It is recommended to use Internet Explorer® 6.0 SP2. When using Windows® 2000, it is recommended to use Internet Explorer® 6.0 SP1. 	Operating Instructions
	<ul style="list-style-type: none"> Depending on the traffic of the network or the concentration of access to the unit, there might be difficulties displaying the camera picture. Click the reload button of the browser to request the camera picture to be refreshed. 	—
The camera does not move onto the preset position exactly.	<ul style="list-style-type: none"> When the camera position is moved from the preset position after turning on the power of the camera, execute the refresh position function from the [Initialization] tab of the "Maintenance" page. 	50
	<ul style="list-style-type: none"> Is any part of the camera worn out? When the camera does not move to the exact position frequently, the driving parts may be worn out. Contact the dealer for assistance. 	Operating Instructions of camera
No image is displayed (or too dark).	<ul style="list-style-type: none"> Is the brightness setting set at an appropriate level? Click the [RESET] button of "BRIGHTNESS". 	6
Images are displayed washed out.	<ul style="list-style-type: none"> Is the brightness setting set at an appropriate level? Click the [RESET] button of "BRIGHTNESS". 	6
Cannot adjust the focus correctly.	<ul style="list-style-type: none"> Is there dust or dirt on the transparent part (over the lens) of the dome cover (camera shell)? Clean the transparent part of the dome cover. 	Operating Instructions of camera
	<ul style="list-style-type: none"> Are objects hard to focus on with the auto focus function? Adjust the focus manually. 	6
Flicker appears on the screen.	<ul style="list-style-type: none"> When flickers appear frequently, set the shutter speed to "AUTO" or "1/100". 	Page 28 and Operating Instructions of camera
	<ul style="list-style-type: none"> Is "ON" selected for "Super Dynamic 3" ? Set to "OFF". 	Page 28 and Operating Instructions of camera

Symptom	Cause/solution	Reference pages
<p>Images cannot be saved on the SD memory card. "SD-MEMORY NOT DETECTED" is notified in the message of Panasonic alarm protocol.</p>	<ul style="list-style-type: none"> • Is the SD memory card inserted correctly? 	Operating Instructions
	<ul style="list-style-type: none"> • Is the SD memory card formatted? • When the power is shut down while saving images on the SD memory card because of power failure, etc., it may become impossible to write data on the SD memory card. In such a case, format the SD memory card after obtaining the images saved on the card. 	21
	<ul style="list-style-type: none"> • Isn't the write protect switch set to "LOCK"? When the write protect switch is set to "LOCK", available size/total size indication of the SD memory card will be "*****KB/*****KB". 	-
	<ul style="list-style-type: none"> • Isn't the SD memory card out of order? There are limited times to overwrite on an SD memory card. When frequently overwritten, it may be at the end of product life. It is recommended to replace the SD memory card. 	-
<p>Cannot control the camera.</p>	<ul style="list-style-type: none"> • Confirm that the camera is connected correctly and firmly. 	Operating Instructions
	<ul style="list-style-type: none"> • Confirm that the connected camera is available for the desired operation. Depending on the models of the connected cameras, the available functions may be different. Refer to the operating instructions of the connected camera for further information. 	Operating Instructions of camera
<p>The AUTO MODE (OFF, auto pan, sort, sequence, patrol) of the camera changes.</p>	<ul style="list-style-type: none"> • Check the settings for the self return function. 	Page 28 and Operating Instructions of camera

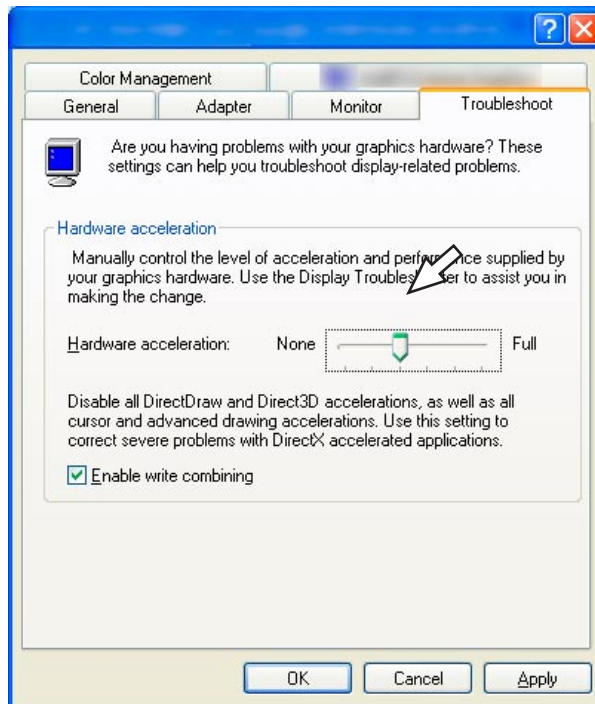
Symptom	Cause/solution	Reference pages
<p>Cannot receive audio from the unit./Cannot transmit audio to the unit.</p>	<ul style="list-style-type: none"> • Are the microphone and the speaker connected correctly and firmly? Confirm that they are connected correctly and firmly. 	<p>Operating Instructions</p>
	<ul style="list-style-type: none"> • Is the viewer software installed on a PC? Confirm that the viewer software "Network Camera View3" is installed. 	<p>Operating Instructions</p>
	<p>Is the audio mode set correctly?</p> <ul style="list-style-type: none"> • To receive and transmit audio, select "Interactive" for "Audio mode" on the [Audio] tab. • Are you accessing with the access level that can receive and transmit audio? • Access with the access level selected for "Authentication" on the [Audio] tab. 	<p>29</p>
<p>The mic input button and the audio output button on the "Live" page do not display the current status in real time.</p>	<ul style="list-style-type: none"> • Is the viewer software installed on a PC? Confirm that the viewer software "Network Camera View3" is installed. 	<p>Operating Instructions</p>
	<ul style="list-style-type: none"> • Does your PC meet the system requirements to operate this unit? Check the system requirements. 	<p>Operating Instructions</p>
	<ul style="list-style-type: none"> • Are the mic input button and audio output buttons set to display the current status in real time? Select "Real time" for "Alarm status update mode" on the [Basic] tab of the "Basic setup" page. 	<p>19</p>

Symptom

When displaying MPEG-4 images on two browser windows or more, images from two cameras or more are displayed in sequence on a single browser window.

Cause/solution

- This may occur due to the display adapter and driver combination.
When this occurred, update the driver of the display adapter to the latest version first.
If updating the driver does not solve the problem, adjust the hardware acceleration as follows.
The following are descriptions for when Microsoft® Windows® XP Professional SP2 is installed on the PC in use.
 - (1) Right-click on the desktop and select "Properties" from the displayed pop-up menu.
 - (2) Select "Settings" from "Display Properties", and then click the [Advanced] button.
 - (3) Click the [Troubleshoot] tab and disable the DirectDraw acceleration by adjusting the level of "Hardware acceleration".

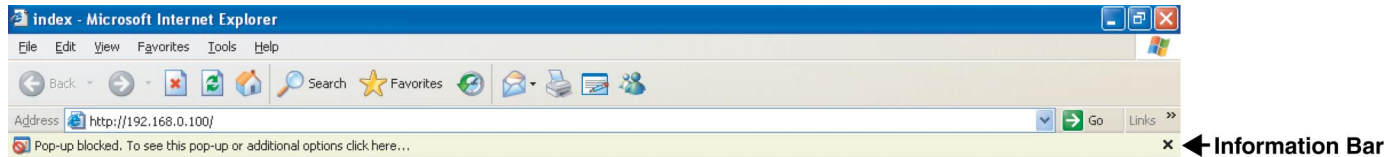


Reference pages

When using a PC on which Windows® XP Service Pack2 (SP2) is installed

The following may occur during operation when using a PC on which Windows® XP Service Pack2 (SP2) is installed. Follow the instructions below when the following occurred. By performing the following solutions, other applications and the security level may not be affected.

The "Information Bar" expressed in the following symptom and solutions will be displayed just below the address bar only when there is information to communicate.



Symptom	Solutions	Reference pages
<p>The following message is displayed on the information bar. "Pop-up blocked. To see this pop-up or additional options, click here..."</p>	<ul style="list-style-type: none"> Click the information bar and select "Always Allow Pop-ups from This Site...". The dialog window saying "Allow pop-ups from this site?" will be displayed. Click the [Yes] button. 	<p>—</p>
<p>The following message is displayed on the information bar. "This site might require the following Active X control: 'nwc3setup.exe' from 'Matsushita Electric Industrial Co., Ltd'. Click here to install..."</p>	<ul style="list-style-type: none"> Click the information bar and select "Install Active X Control". The "Security Warning" window will be displayed. Click the "Install" button on the displayed "Security Warning" window. 	<p>—</p>
<p>An unnecessary status bar or scroll bar is displayed on the pop-up window.</p>	<ul style="list-style-type: none"> Click "Internet Options" on the Tools menu of Internet Explorer, and then click the [Security] tab. Then, click the [Custom Level...] button to open the "Security Setting" window. Under "Miscellaneous", select "Enable" for "Allow script-initiated windows without size or position constraints". Click the [OK] button. The "Warning" window will be displayed. Click the [Yes] button. 	<p>—</p>
<p>Images are not displayed or refreshed smoothly.</p>	<ul style="list-style-type: none"> Delete temporary internet files as follows. <ol style="list-style-type: none"> Select "Internet Options..." from "Tools" on the menu bar of Internet Explorer®. The "Internet Options" window will be displayed. Click the [Delete Files...] button in the "Temporary Internet files" section on the [General] tab. 	<p>—</p>

For U.S., Canadian and Puerto Rican fields:

Panasonic System Solutions Company,
Unit Company of Panasonic Corporation of North America

Security Systems

www.panasonic.com/security
For customer support, call 1.877.733.3689

Executive Office: Three Panasonic Way 2H-2, Secaucus, New Jersey 07094

Zone Office

Eastern: Three Panasonic Way, Secaucus, New Jersey 07094

Central: 1707 N. Randal Road, Elgin, IL 60123

Southern: 1225 Northbrook Parkway, Suwanee, GA 30024

Western: 6550 Katella Ave., Cypress, CA 90630

Panasonic Canada Inc.

5770 Ambler Drive, Mississauga,
Ontario, L4W 2T3 Canada (905)624-5010
<http://www.panasonic.ca>

Panasonic Sales Company

Division of Panasonic Puerto Rico Inc.
San Gabriel Industrial Park 65th Infantry Ave. KM. 9.5 Carolina
P.R. 00985(809)750-4300

For European and other fields:

Matsushita Electric Industrial Co., Ltd.

Osaka, Japan

<http://panasonic.net>